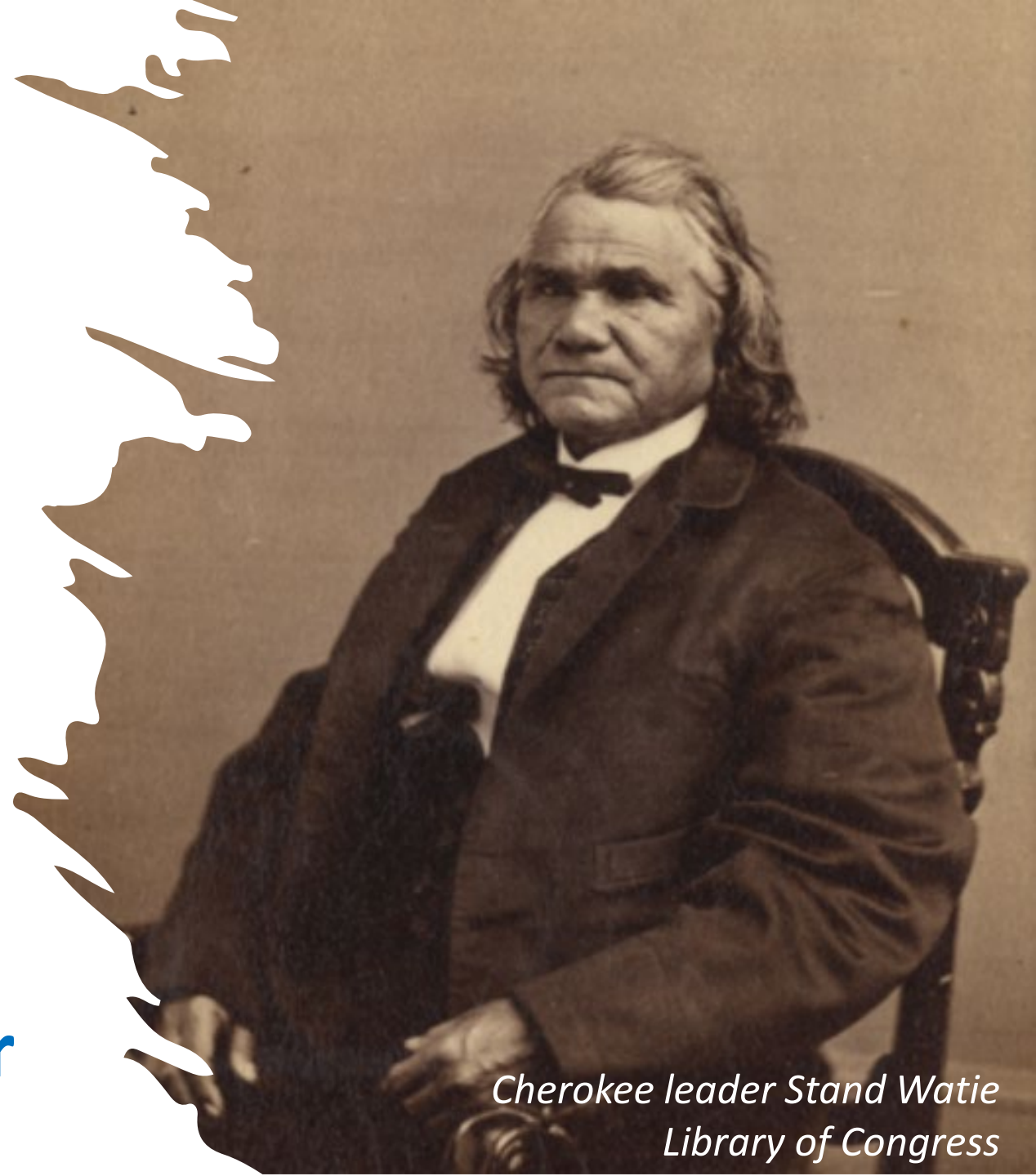




Unit 8: *Civil War*

Extension Lesson:
Who's who of the Civil War



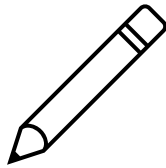
Cherokee leader Stand Watie
Library of Congress

Warm-up:

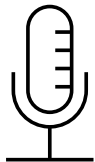
Follow the directions to complete your warm-up



- Choose ONE point of view from the options in the graphic organizer.



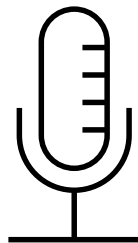
- Write a short journal entry (3 – 5 sentences) about your experience during the Civil War from that point of view.



- Share with a partner.



Share with the class



The point of view I chose
was _____

A journal entry from this point of
view during the Civil War might
sound like this: _____



Essential Question



Who were some of the key people of the Civil War, and why were they significant to the era?

In today's lesson...

- 1. We will** study key people of the Civil War, identifying important information about their lives and their significance to the era.
- 2. I will** use the reading or readings provided to record significant information about people from the Civil War era.

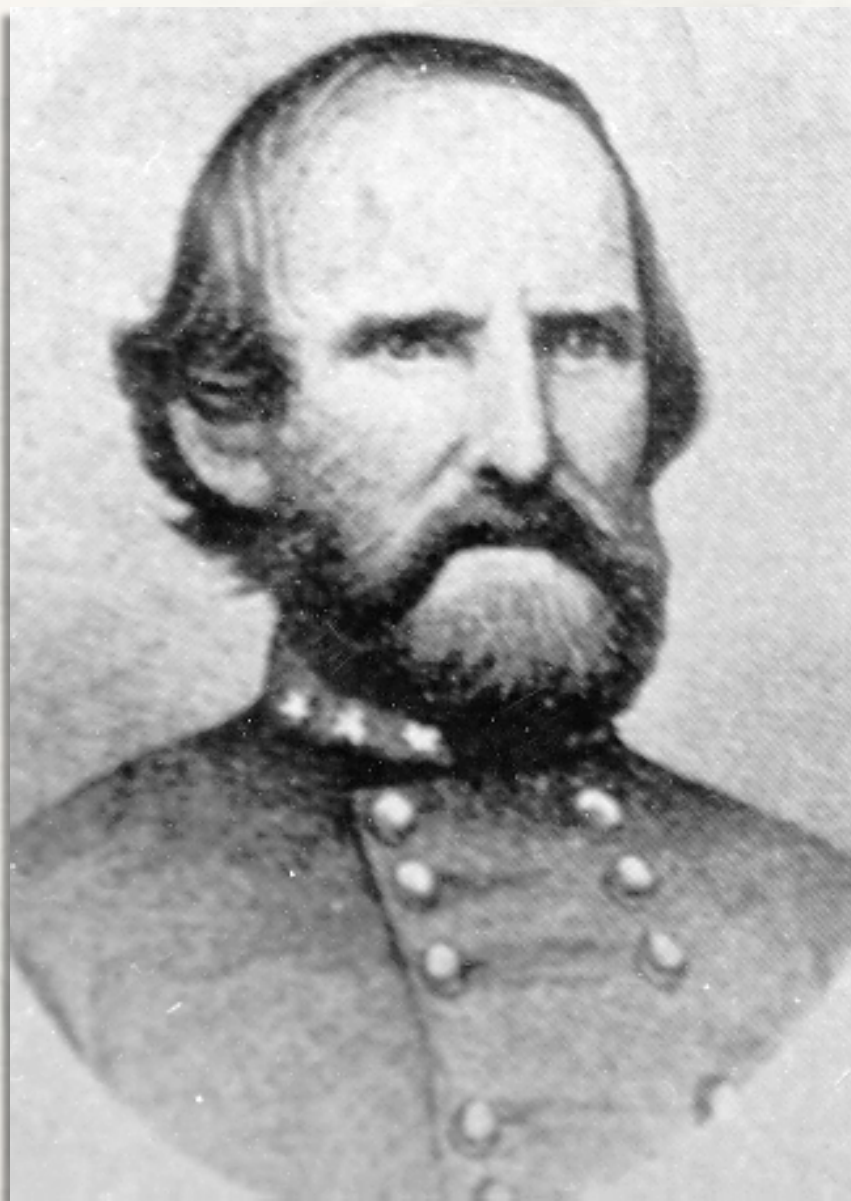


The Portal to Texas History

Sam Houston

utter them now. I was denounced then as a traitor. I am denounced now. Be it so! Men, who never endured the privation the toil, the peril that I have for my country, call me a traitor, because I am willing to yield obedience to the Constitution and the constituted authorities. Let them suffer what I have for this Union, and they will feel it entwining so closely around their hearts, that it will be like snapping the cords of life to give it up. Let them learn to respect and support one government before they talk of starting another. I have

A speech given by Governor Houston
The Portal to Texas History



Texas State Cemetery Records

Ben McCulloch



The Battle of Pea Ridge

The Library of Congress



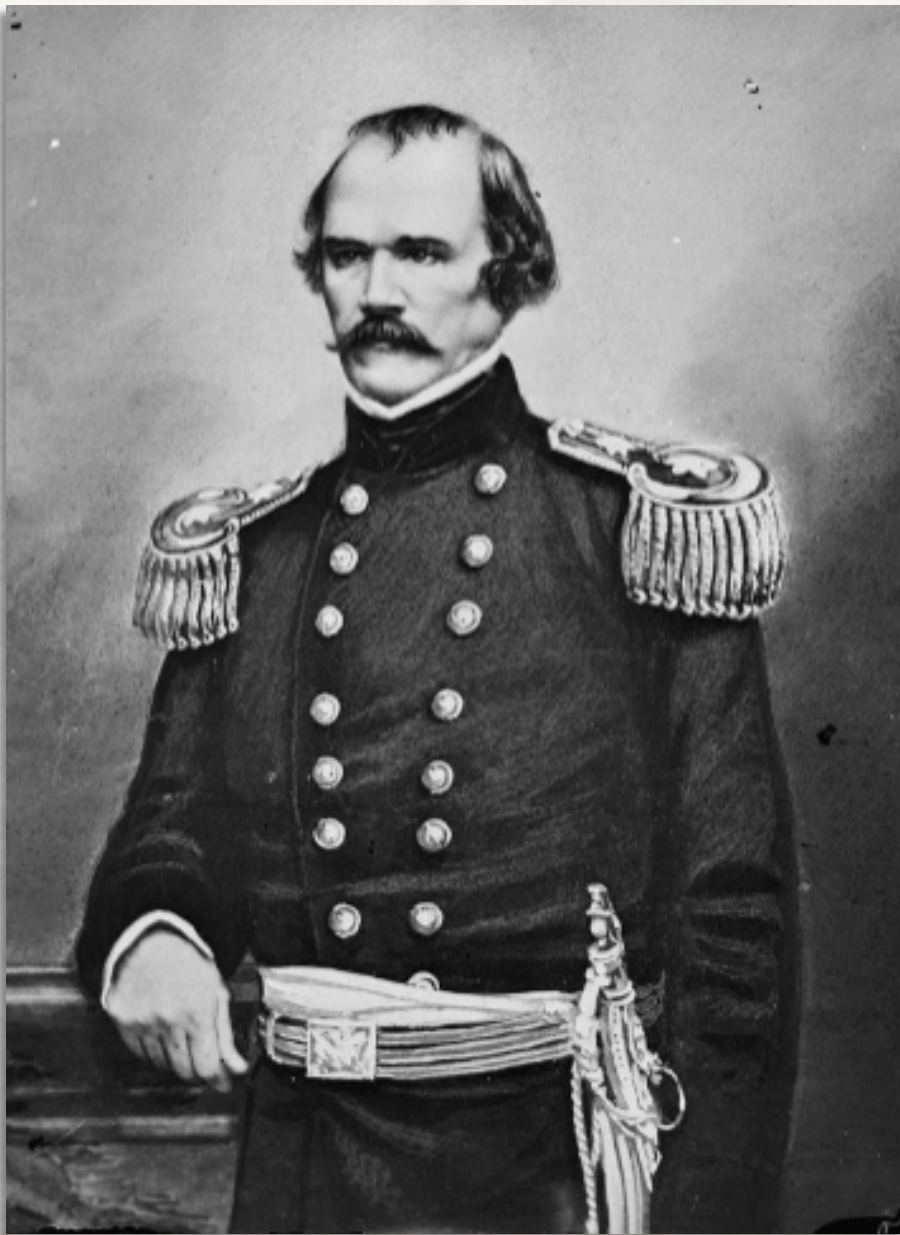
The Library of Congress

John Bell Hood



Artwork depicting Hood's Texas Brigade fighting at
"the Devil's Den" at the Battle of Gettysburg.

The Portal to Texas History



The Library of Congress

Albert Sidney Johnston



The Battle of Shiloh
The Library of Congress

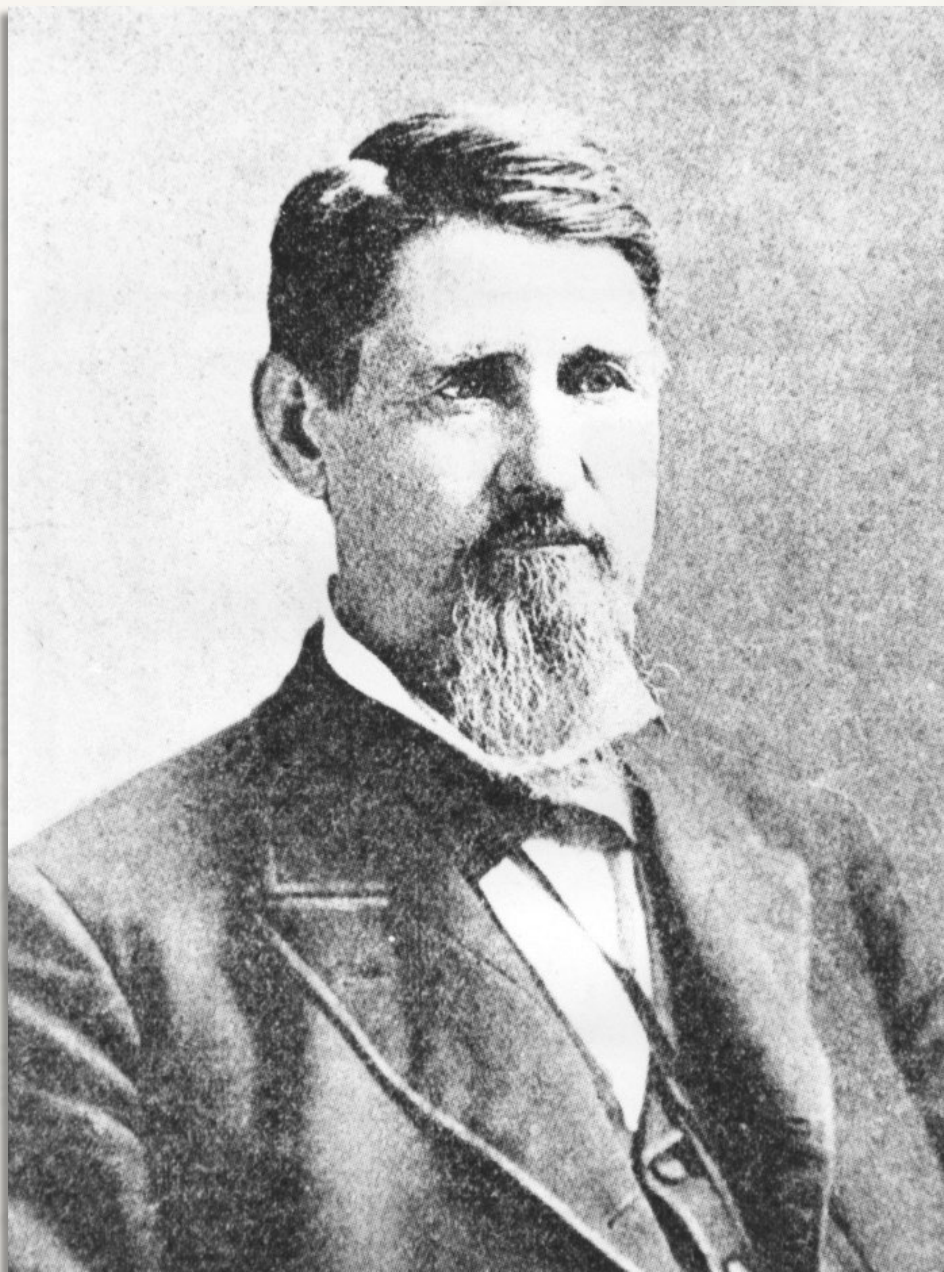
Stand Watie



RUMORS.—It is reported here that Stand Watie has got even with the feds. Some weeks since they cut off his train, took Col. Clarkson prisoner and did considerable damage. It is reported here, this week, that he followed them up, cut them to pieces and retook wagons etc.—
Little Rock Democrat.

The Dallas Herald, Saturday August 23, 1862
The Portal to Texas History

The National Archives



James Throckmorton

—
AUSTIN, March 15, 12 o'clock, M.
GENTS: Oath of office just administered to all Delegates holding office in the State, in open Convention. All took it unhesitatingly, and amongst the rest Mr. Throckmorton, who figured so largely in opposition to secession. To-morrow, the Governor, Lieutenant-Governor, and other officers of the State Department will be required to appear at the bar of the Convention at 12 o'clock and take the oath.



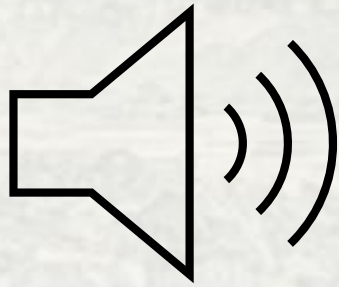
John Salmon "Rip" Ford



The Battle of Palmito Ranch
Texas Military Forces Museum, Camp Mabry, Austin



Mollie Arlene Kirkland Bailey



Click here to go to a
1939 recording of
“The Old Gray Mare”
at the Library of
Congress

The box-office was opened this morning for the sale of tickets and the reserving of seats for the Houston Quartette club concert, to be given at the opera-house on Monday evening with the Eppinghausen-Bailey Concert company, and despite the rain quite a large number ventured out in the interest of securing good seats.

An advertisement in a 1890s newspaper for a performance of the Bailey Concert Company.

The Portal to Texas History

Harriet Glass Barrett



A 1970 photo of slave quarters that were preserved in Salado, Texas. This was not the plantation where Harriet was enslaved.

The Portal to Texas History



A photo of the all-Black Harlem Hellfighters unit during World War I. Harriet's son served in this unit, though he is not pictured here.

The Portal to Texas History

Benjamin Franklin Terry



An 1863 photograph of Men who
served in Terry's Texas Rangers
The Portal to Texas History

DEATH OF COL. TERRY.

Sad indeed was the intelligence brought by the train of the 24th, of the death of Col. B. F. Terry. Of all the men who went from Texas or who were left in Texas, we could not have found one whom we could not have better lost. Deep is the grief that overwhelms the community in this sad hour. Not a man that walks our streets to-day but feels he has lost a brother and a friend. Not a man but feels that he has a special interest in the universal mourning of the people.

Newspaper announcement of the death of
Benjamin F. Terry.

The Portal to Texas History.

Santos Benavides

their brutalities and depredations. Santos Benavides, (who, by the way, has proved himself a devoted citizen of Texas, on many trying occasions), raised a company at

A newspaper article praises Benavides for defending Laredo from raiding American Indians.

The Portal to Texas History



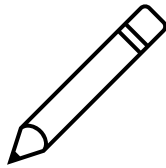
A map of Texas from 1848. The location of Laredo is circled. The Portal to Texas History.

Exit Ticket:

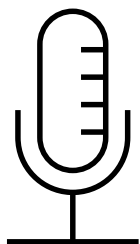
Follow the directions to complete your exit ticket.



- Choose TWO people from the lesson.
- Complete the sentence stems in the graphic organizer based on their similar or different points of view.
- Share with a partner.



Share with the class



I think _____ and _____
would have been *allies* /
opponents because _____