

# *Unit 10:* **Cotton, Cattle, & Railroads**

## *Lesson 9:* **Texas Today**

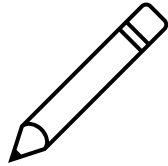
Cotton transport on the Houston and Texas Central Railway  
Library of Congress

# Warm-up

Follow the directions to complete your warm-up



- Read the scenario provided.



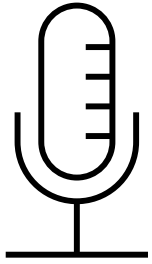
- Respond to the questions that follow.



- Discuss with a partner

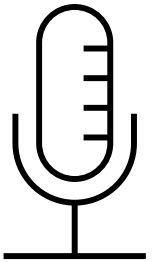


# Share with the class



One way this would affect my business is \_\_\_\_\_

One thing that could fix this problem is \_\_\_\_\_



# Essential Question

What is the Texas Railroad Commission, why was it established, and how have its responsibilities evolved over time?

# In today's lesson...

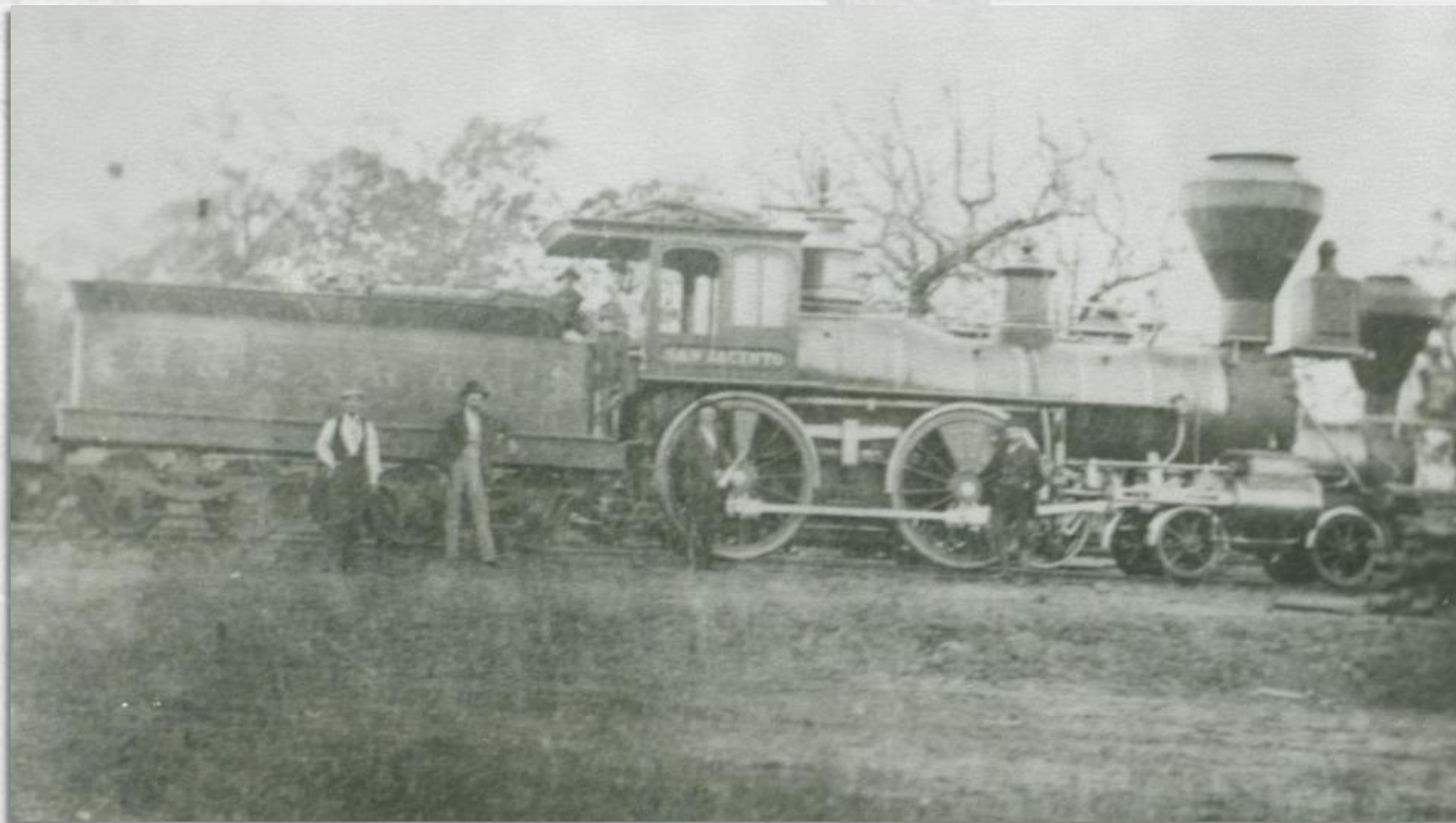
1. **We will** examine the origins, purpose, and development of the Texas Railroad Commission and its significance to Texas and U.S. history.
2. **I will** read a passage, identify key information, summarize main ideas, explain cause-and-effect relationships and the significance of topics in the reading.

# Part I: The Texas Railroad Commission





# Origins of the Railroad Commission

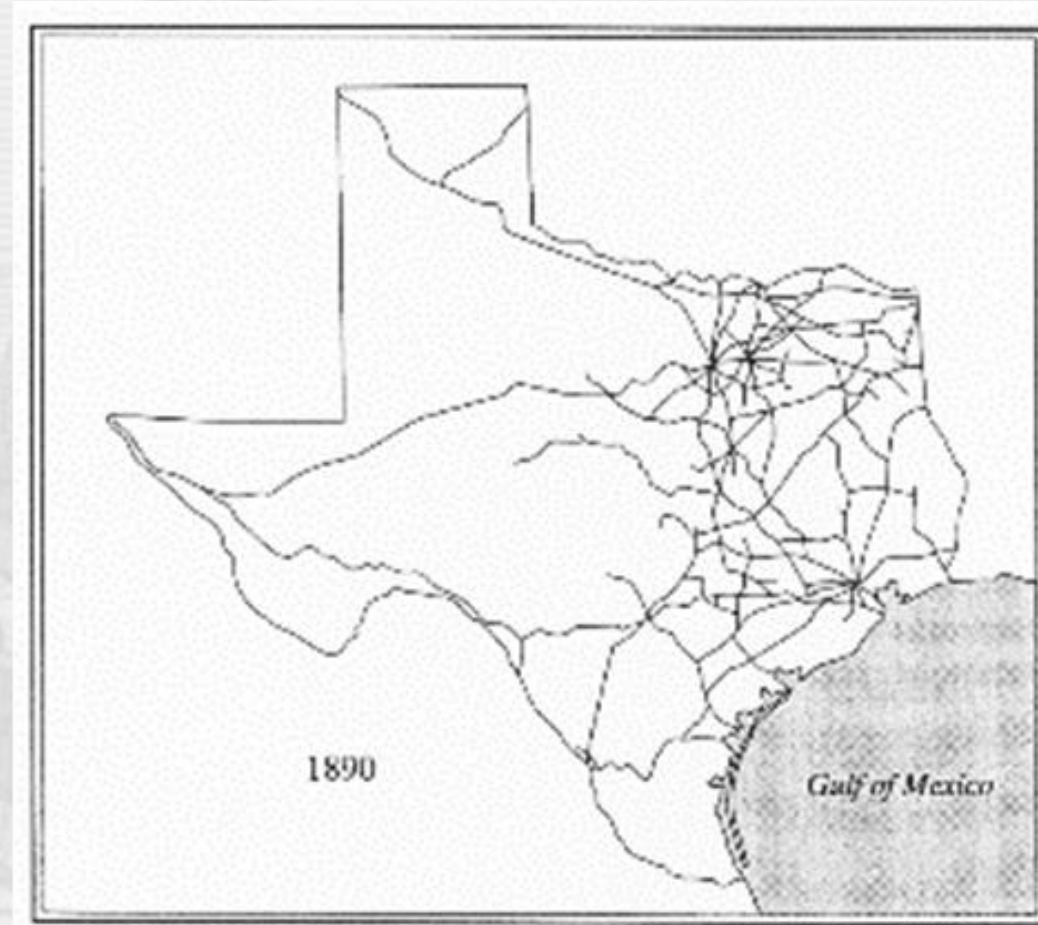
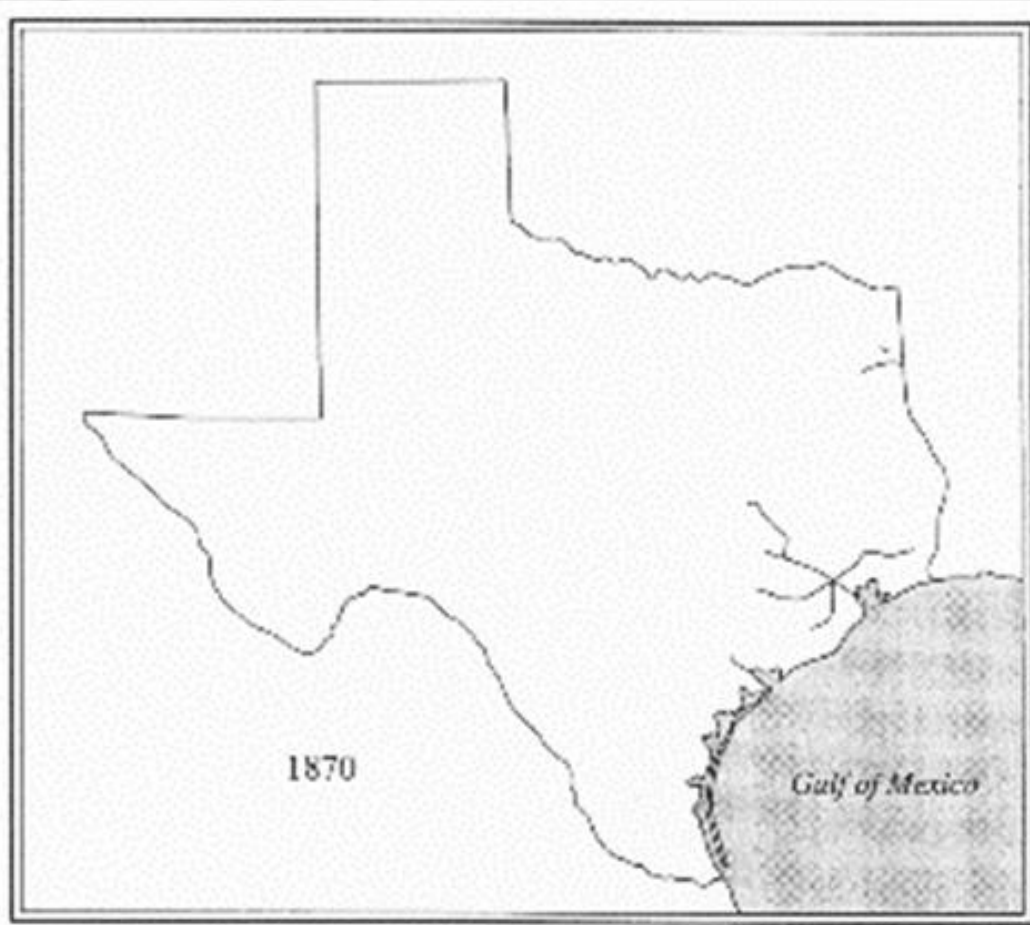


*A railroad in Longview, Texas. 1870.*

The Portal to Texas History.

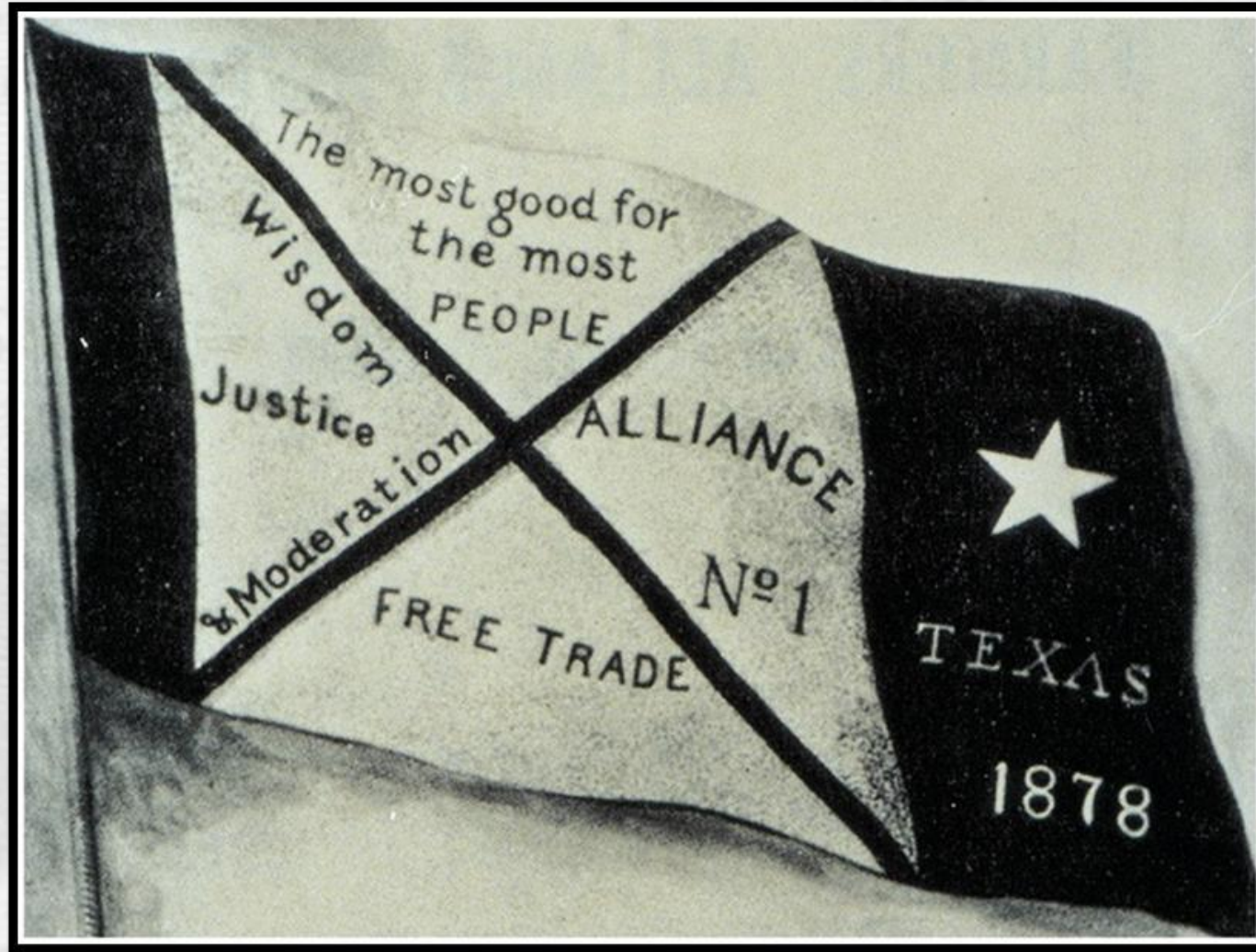
<https://education.texashistory.unt.edu>

# The Growth of Railroads in Texas





# Farmers Organize and Get Involved



The Farmers Alliance Banner

# Part II: Comprehension Questions

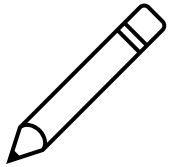


# Exit Ticket

Follow the directions to complete your exit ticket



- Read and answer each True or False statement.



- Correct the wrong information in the False statements.

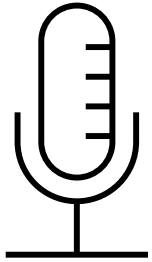


- Discuss with a partner





# Share with the class



*(Choose one statement and read it)* This statement is **True** / **False**.

I corrected the false information in this statement by writing \_\_\_\_\_

