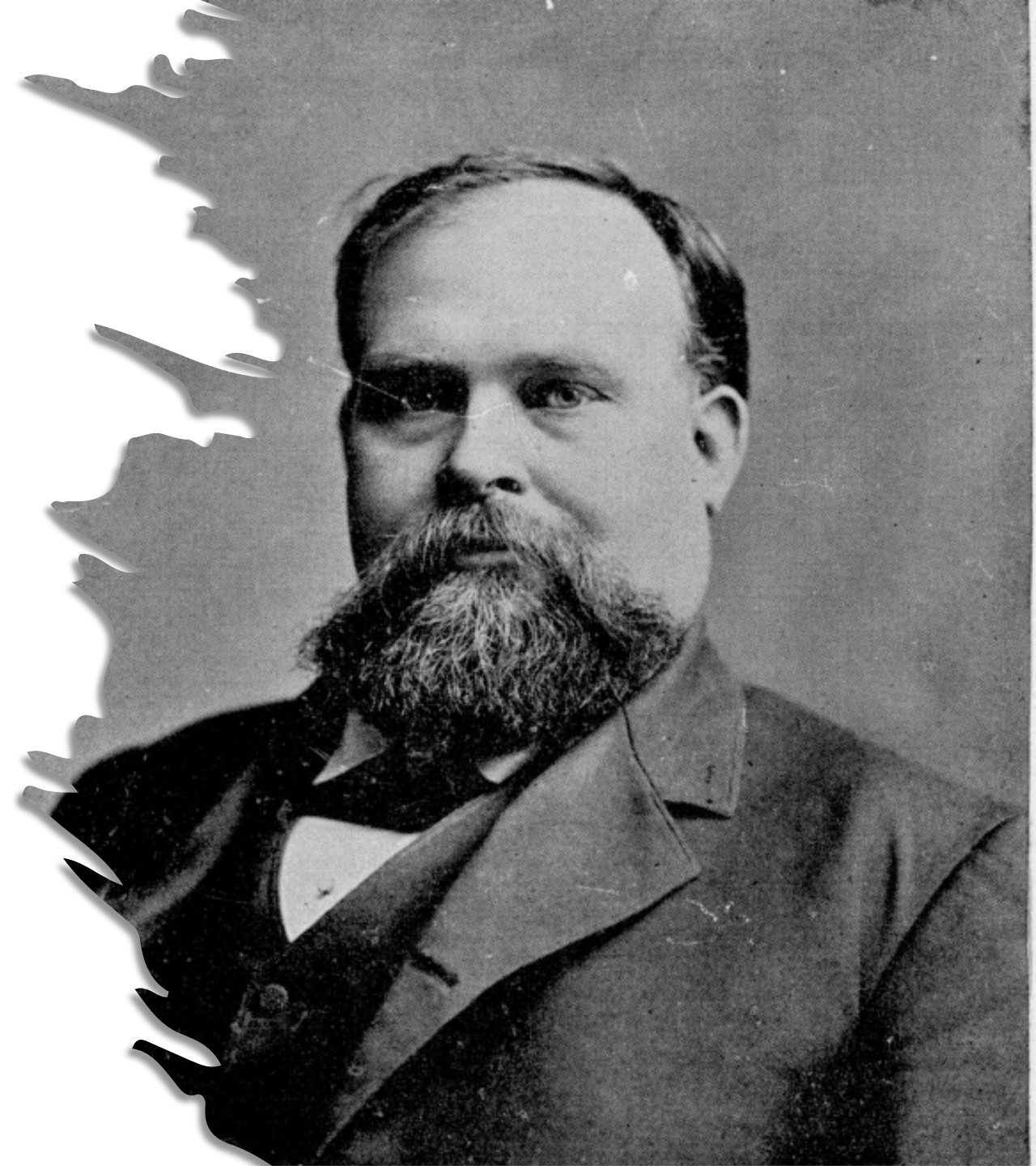




Unit 10: **Cotton, Cattle, & Railroads**

Lesson 5:

Who's Who of Cotton, Cattle, & Railroads



Warm-up

Follow the directions below to complete your warm-up



- Read the scenario on your warm-up.



- Write your response in the space provided.

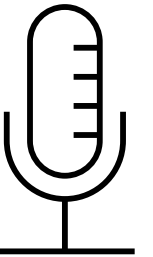


- Share with a partner.



Share with the class:

One thing I would expect to find in a time capsule from the 1880s is _____



Essential Question

Who were some of the significant people during Cotton, Cattle, & Railroads, and how were they significant to the era?

In Today's Lesson

1. **We will** learn about some of the significant individuals of the Cotton, Cattle, & Railroads era.
2. **I will** research the assigned number of individuals and complete a worksheet recording information about each person's background, achievements, and significance.



The Portal to Texas History

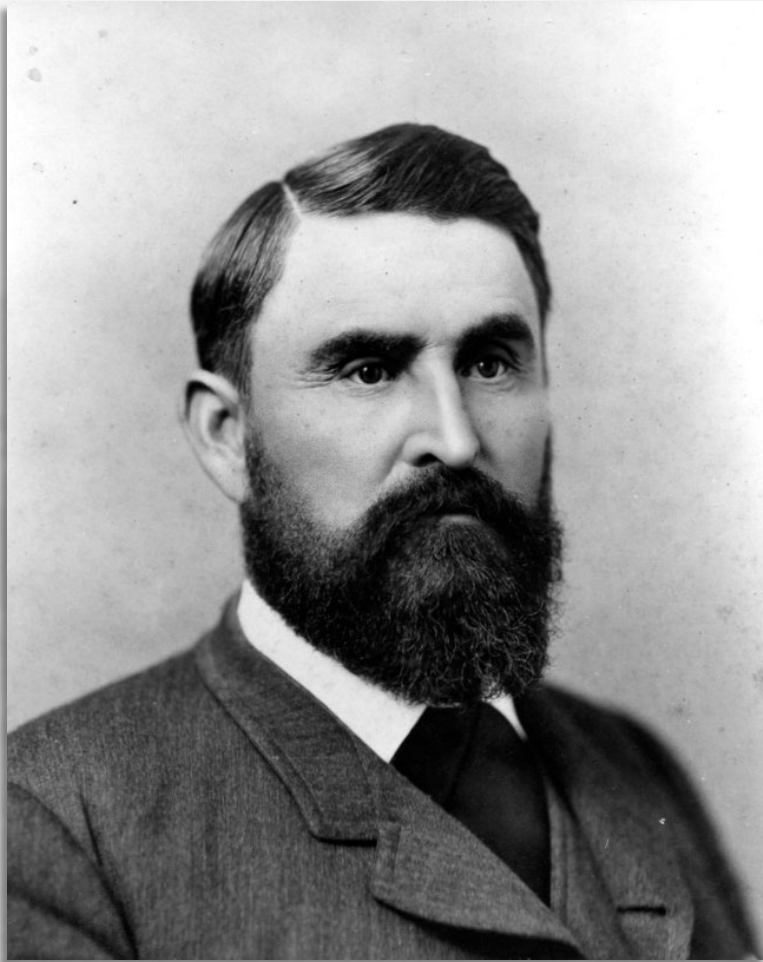
Quanah Parker



The Portal to Texas History



Charles Goodnight



The Portal to Texas History



Lunch time on the JA Ranch
The Portal to Texas History



Mary Ann “Molly” Dyer Goodnight



*Texas State Historical
Association*



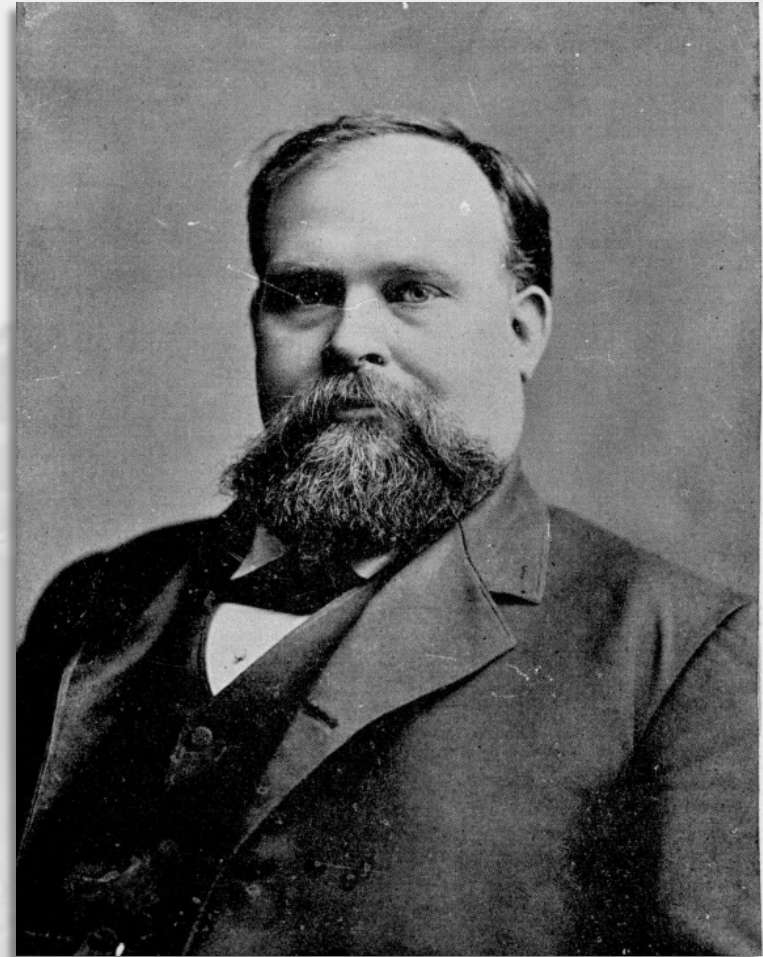
Molly and her husband, Charles in their later years.
Texas State Historical Association.



Hogg and his employees in the print shop of
the newspaper he founded in Longview, TX.

The Portal to Texas History

James “Jim” Hogg



The Portal to Texas History



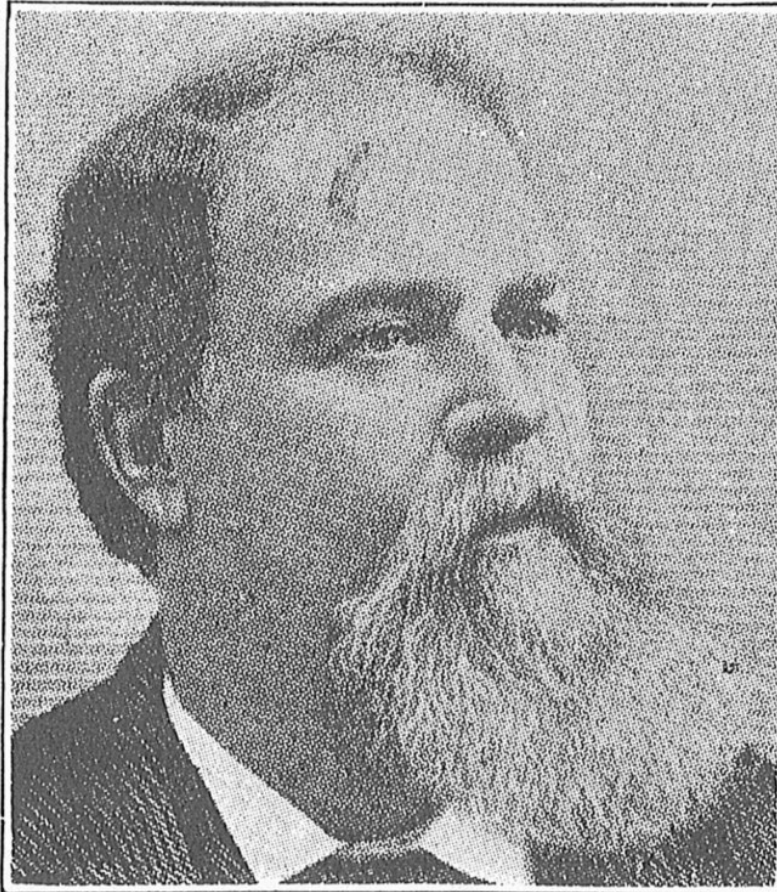
Jesse Chisholm



The Chisholm Trail
Texas State Historical Association

Texas State Historical Association

Christopher Columbus Slaughter



COL. C. C. SLAUGHTER

The Portal to Texas History



A Hereford bull at the Lazy S Ranch, 1900

The Portal to Texas History



Richard King



An official building of the King Ranch today,
Kingsville, TX.

The Portal to Texas History



Henrietta Chamberlain King



Texas State Historical Association



The original King ranch house, before it was
destroyed by fire in 1911.

Texas State Historical Association



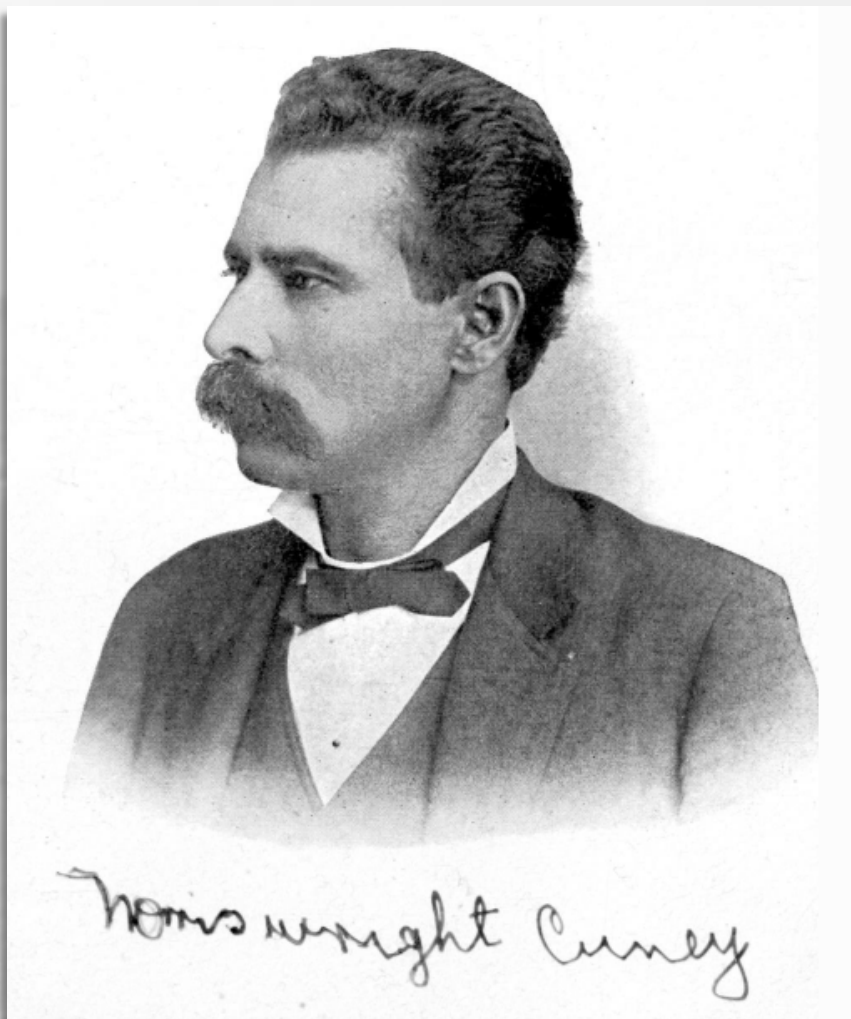
Buffalo Soldiers



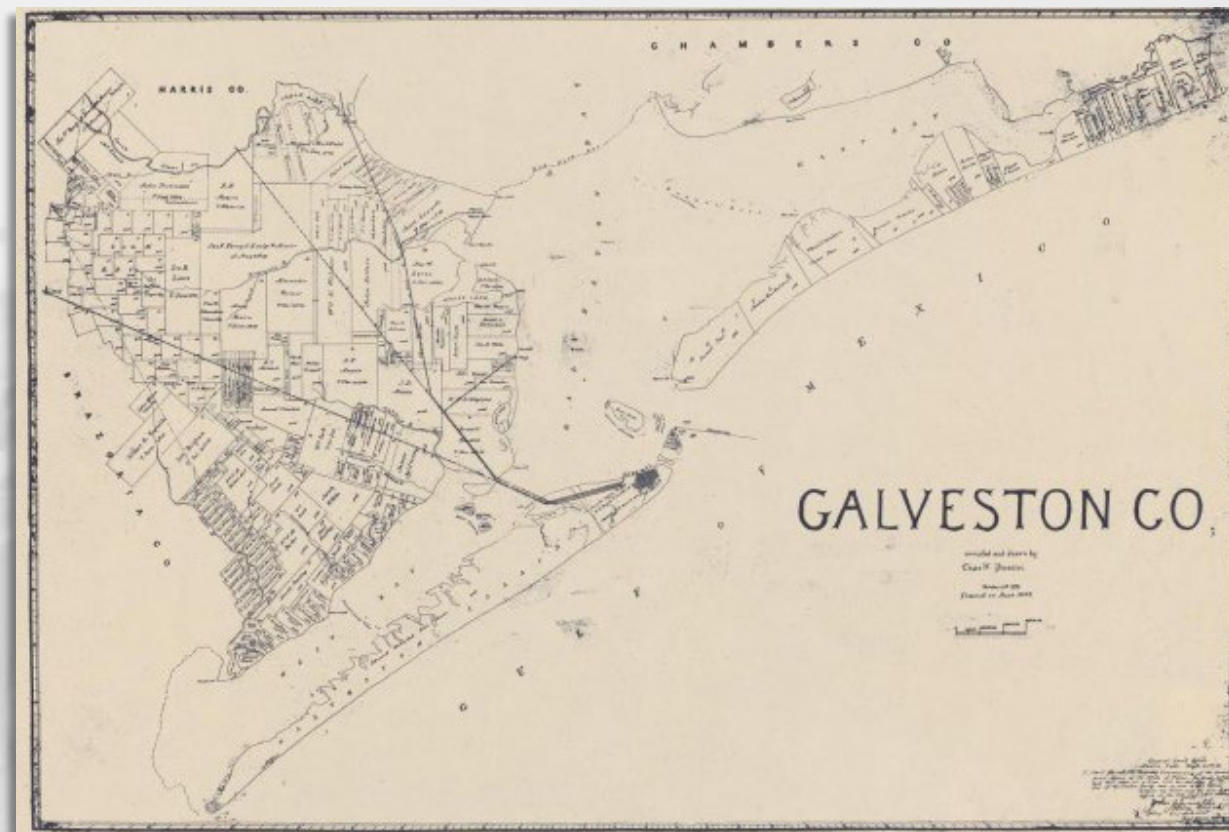
Buffalo Soldiers of the 25th Infantry, 1890. *The Library of Congress.*



Norris Wright Cuney



The Portal to Texas History



Cuney's Texas home city of Galveston, 1899.
The Portal to Texas History



Robert Salas, descendant of Los Kineños and master saddle maker in his workshop, 2002.

The Portal to Texas History

Los Kineños



A typical roundup by *Kineños* on the King ranch, 1920s
The Portal to Texas History



Charles William Macune



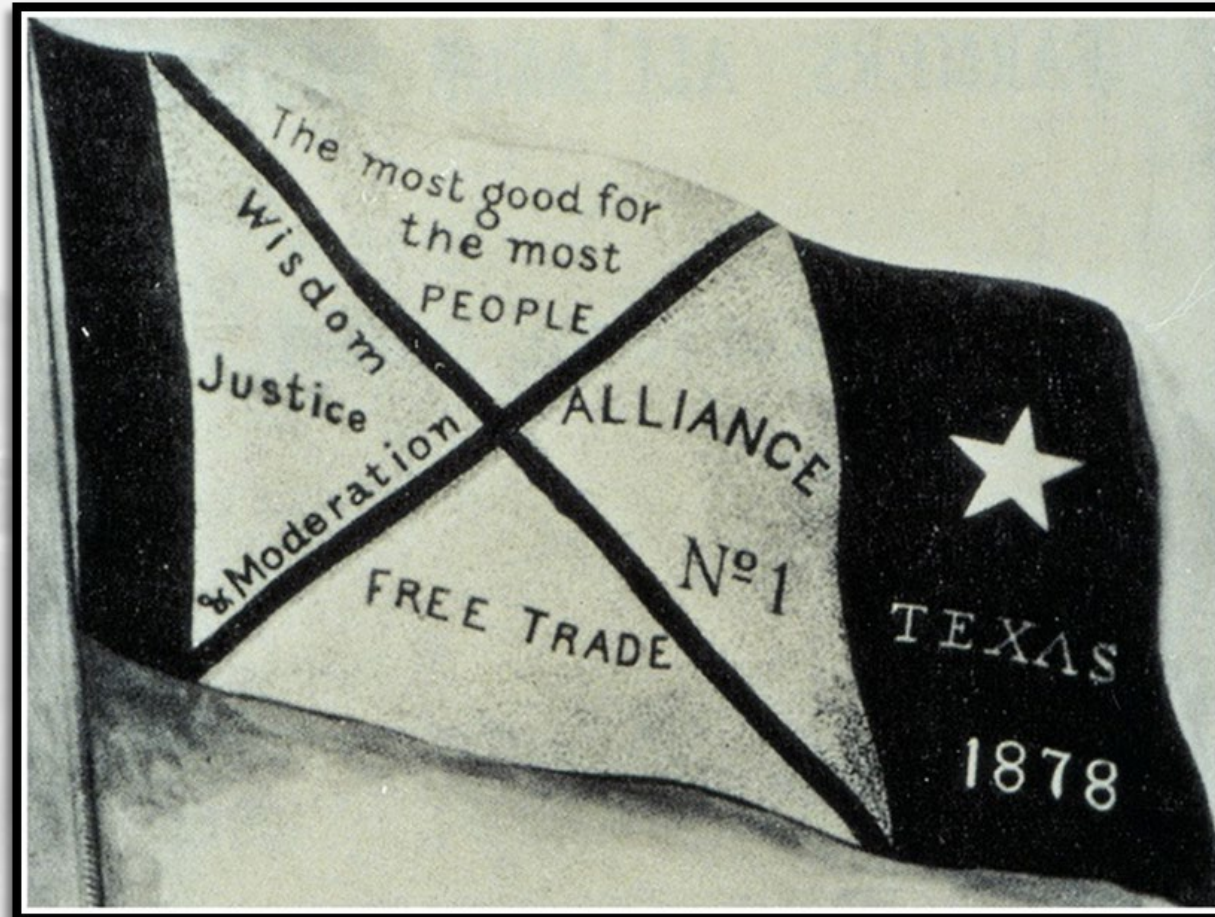
*The Farmers' Alliance History and
Agricultural Digest, 1891*



A Farmer's Union warehouse for cotton
storage, 1907.

The Portal to Texas History

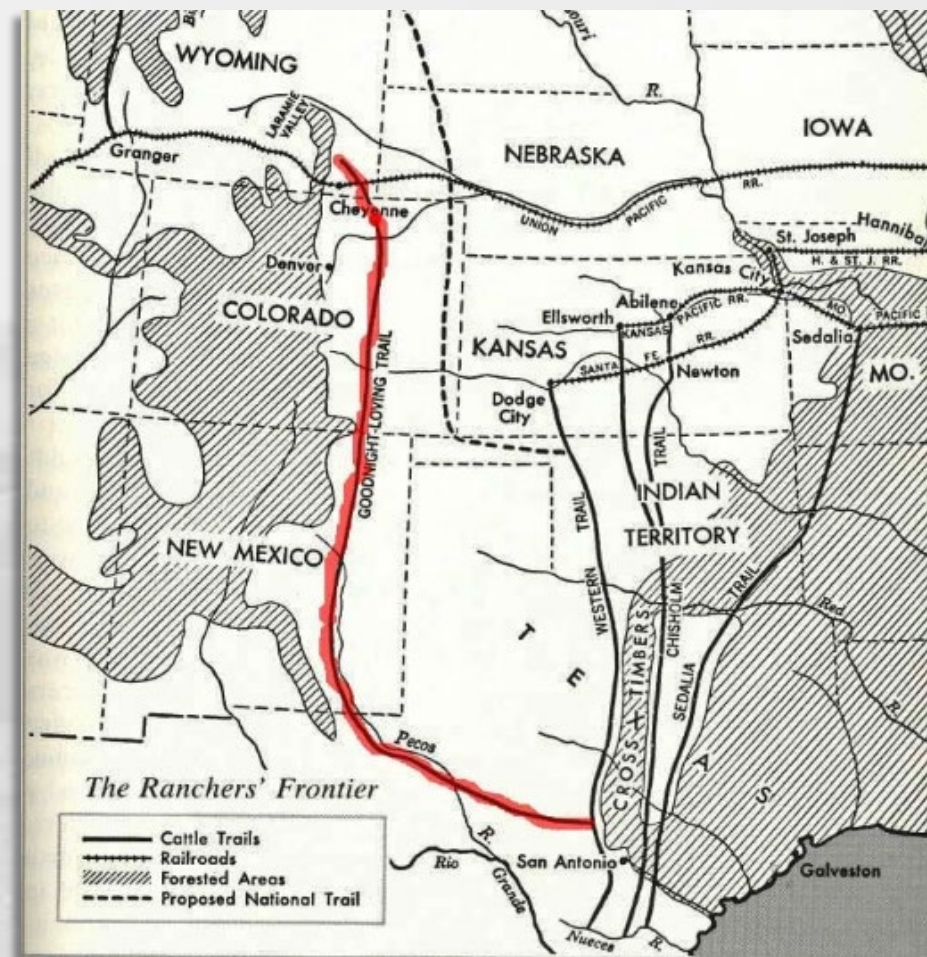
William Robert Lamb



The Farmer's Alliance Banner



Bose Ikard



The Goodnight-Loving Trail
Texas State Historical Association

Exit Ticket

Follow the directions below to complete your exit ticket



- Choose ONE person you learned about in today's lesson.

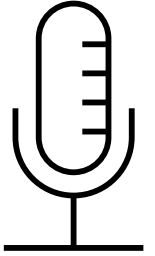


- Answer the questions according to that person's point of view.
- Share with a partner.

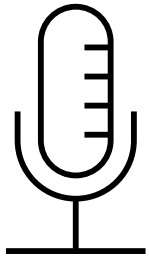


Share with the class:

Regarding Anglo expansion into west Texas, this person probably thought _____



Regarding the Anglo government's role in society and the economy, this person probably thought _____



Regarding Anglo railroad operations, this person probably thought _____

