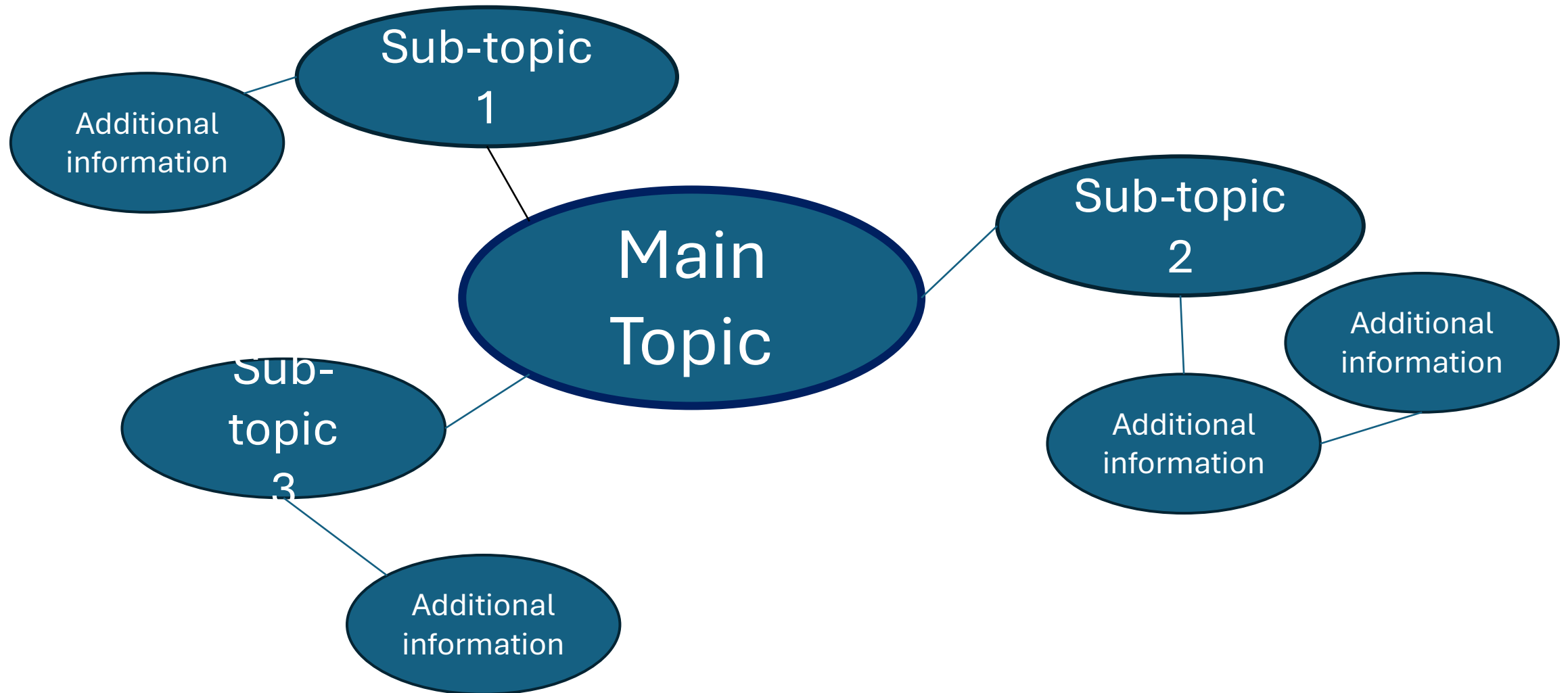


Mind Map

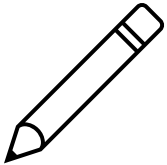


Warm-up:

Follow the directions on your warm-up



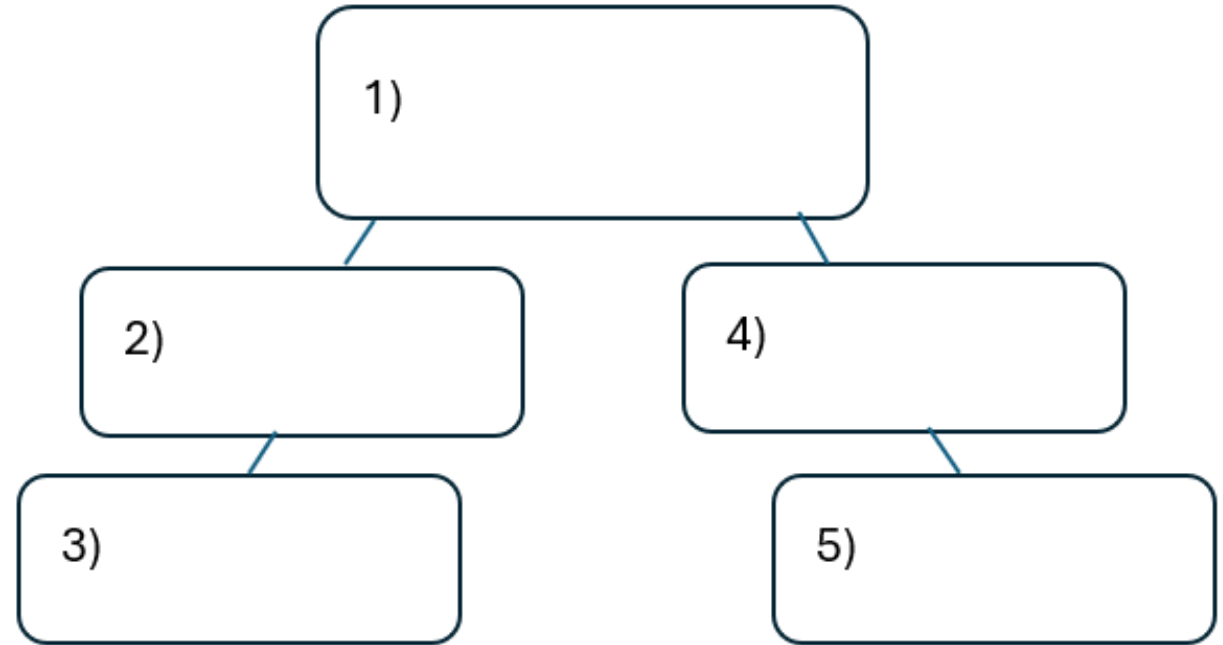
- Use the word bank provided to fill in the small mind map of your warm-up.



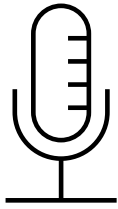
- Place each term where you think it fits best in your mind map.



- Discuss with a partner.

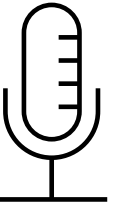


Share with the class

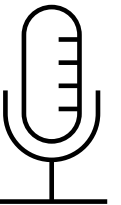


I think the primary topic in box number **one** is _____

I think the subtopic in box number **two** is _____, and box number **three** is _____



I think the subtopic in box number **four** is _____, and box number **five** is _____



Essential Question



How do the key terms and concepts from Unit 4: The Mexican National Era connect to each other?

In today's lesson...

1. We will make connections between key terms and concepts within all of Unit 4: The Mexican National Era

2. I will create a Mind Map using terms and concepts from the class slides presentation.



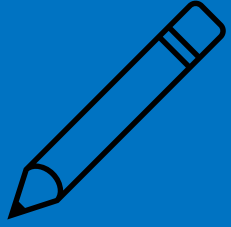
Topic & Subtopics

ONE of these items is the primary unit topic. The other two are subtopics. Choose the primary unit topic and write it in the middle of your paper. Write the other two around the main topic. Leave plenty of space.

Empresario
System

Political Unrest

The Mexican
National Era



Add to your mind map

Place each item below where it fits on your mind map. Keep in mind, you can write some items in more than one place.

Goals

Causes

People

Events



Make Connections

1. Connect each item below to one of the topics on your Mind Map.
2. There may be more than one place that these items connect. Be ready to explain where you put each one.

Federal Constitution
of 1824

Colonization Laws
& Requirements

Mexican
Independence, 1821

Moses Austin

Populate Texas

Stephen F. Austin



Make Connections

1. Connect each item below to one of the topics on your Mind Map.
2. There may be more than one place that these items connect. Be ready to explain where you put each one.

Speak Spanish

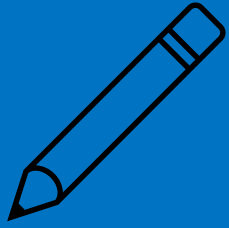
“The Old 300”

Texas joined
with Coahuila

Improve the
economy

Be Catholic

Erasmo Seguín



Make Connections

1. Connect each item below to one of the topics on your Mind Map.
2. There may be more than one place that these items connect. Be ready to explain where you put each one.

States & Federal
gov. share power

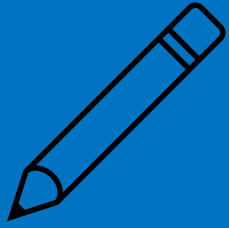
Grow plantation
agriculture

Haden Edwards

Good moral
character

Green DeWitt

Limits on
slavery in TX



Make Connections

1. Connect each item below to one of the topics on your Mind Map.
2. There may be more than one place that these items connect. Be ready to explain where you put each one.

Antonio López
de Santa Anna

Advocate for Anglo
colonization

“Father of TX”

President of
Mexico

Grants rights to
citizens

Martín de León



Make Connections

1. Connect each item below to one of the topics on your Mind Map.
2. There may be more than one place that these items connect. Be ready to explain where you put each one.

Founded
Gonzales

Founded San
Felipe de Austin

Founded
Victoria

Led Fredonian
Rebellion

Federalists

Centralists



Make Connections

1. Connect each item below to one of the topics on your Mind Map.
2. There may be more than one place that these items connect. Be ready to explain where you put each one.

Overthrew
Federalist Gov.

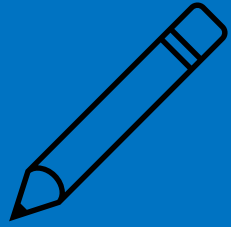
Mier y Terán
Report

Receive cannon
for protection

Slavery
prohibited in TX

Anglos outnumber
Tejanos

Law of April 6,
1830



Make Connections

1. Connect each item below to one of the topics on your Mind Map.
2. There may be more than one place that these items connect. Be ready to explain where you put each one.

Anglos breaking
Texas laws

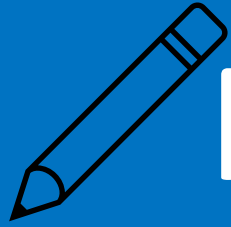
Civil War

Prohibit Anglo
immigration

Federalist vs.
Centralist

1824 constitution
abolished

Conventions of
1832 & 1833



Make Connections

1. Connect each item below to one of the topics on your Mind Map.
2. There may be more than one place that these items connect. Be ready to explain where you put each one.

Conflict at Fort
Anahuac

Request separate
statehood

Turtle Bayou
Resolutions

“Come and
Take it”

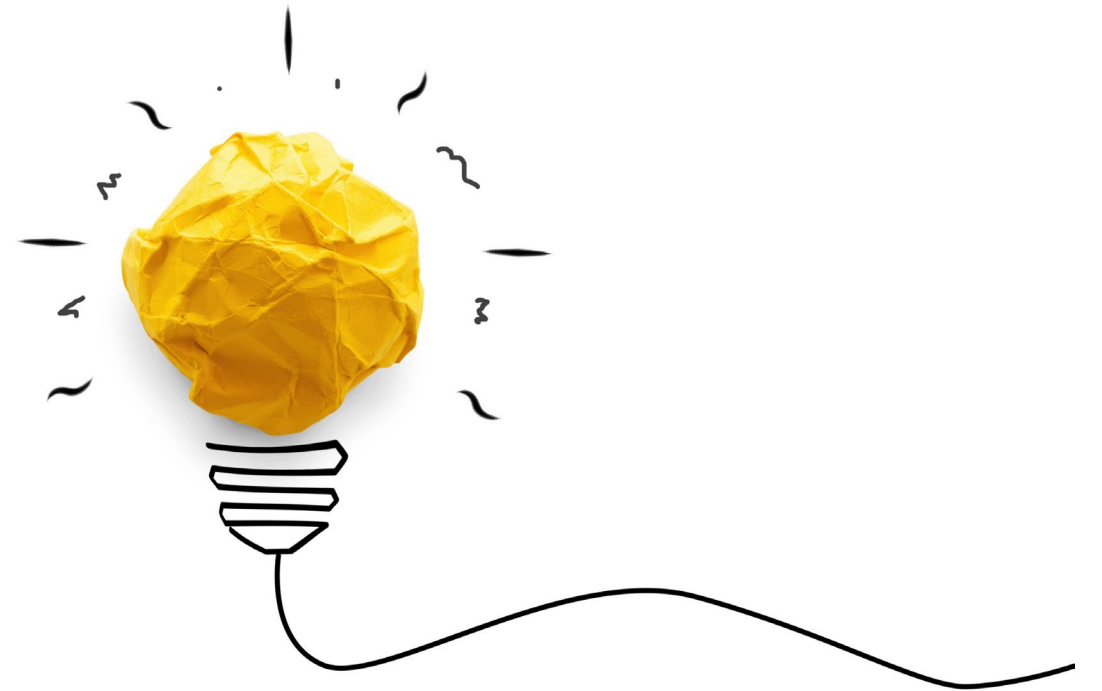
Support
Federalists

Battle between
Anglos and
Mexican military

Create Connections

Now take a few minutes to add any information you can think of to your Mind Map.

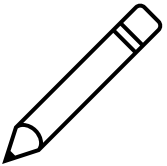
You can add facts, descriptions, explanations, cultural information, or anything else you can think of



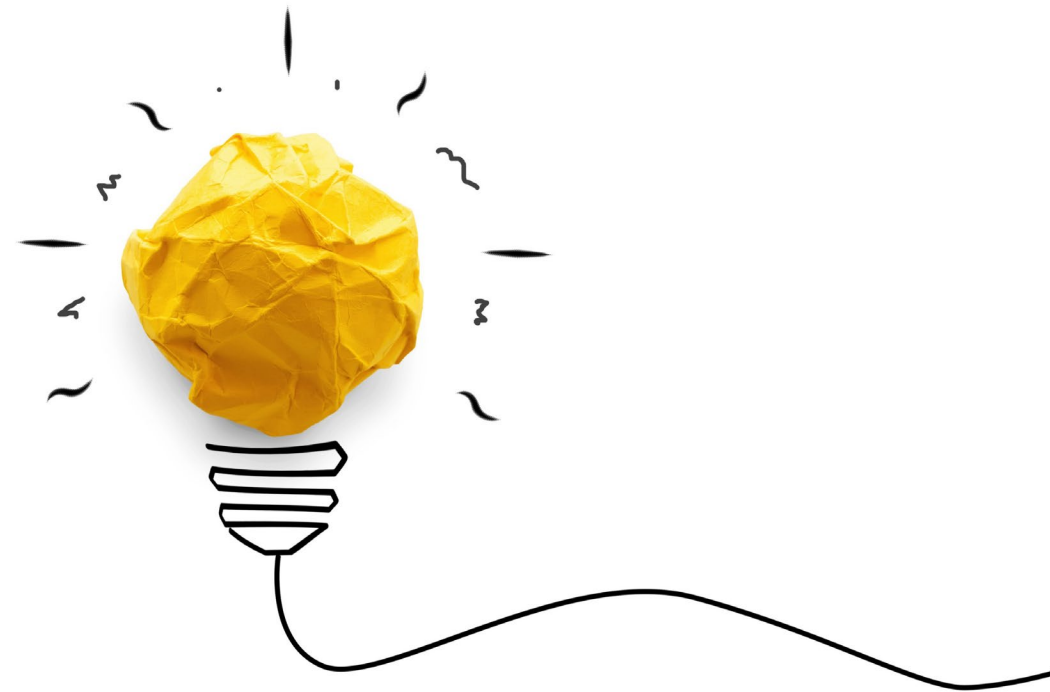
Exit Ticket



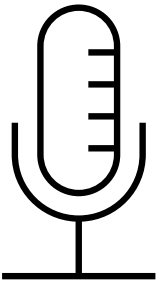
Complete the sentence
summarizing the main
idea from our unit.



Discuss with a partner.



Share your response



The _____ is primarily
characterized by _____