

The background is a historical painting depicting the Council House Fight. It shows a group of Native Americans on horseback in a grassy field, some holding spears and shields. In the distance, there are trees and a city skyline under a cloudy sky.

# *Unit 6:* **The Republic of Texas**

*Extension Lesson:*  
**The Council House Fight**



# Warm-up

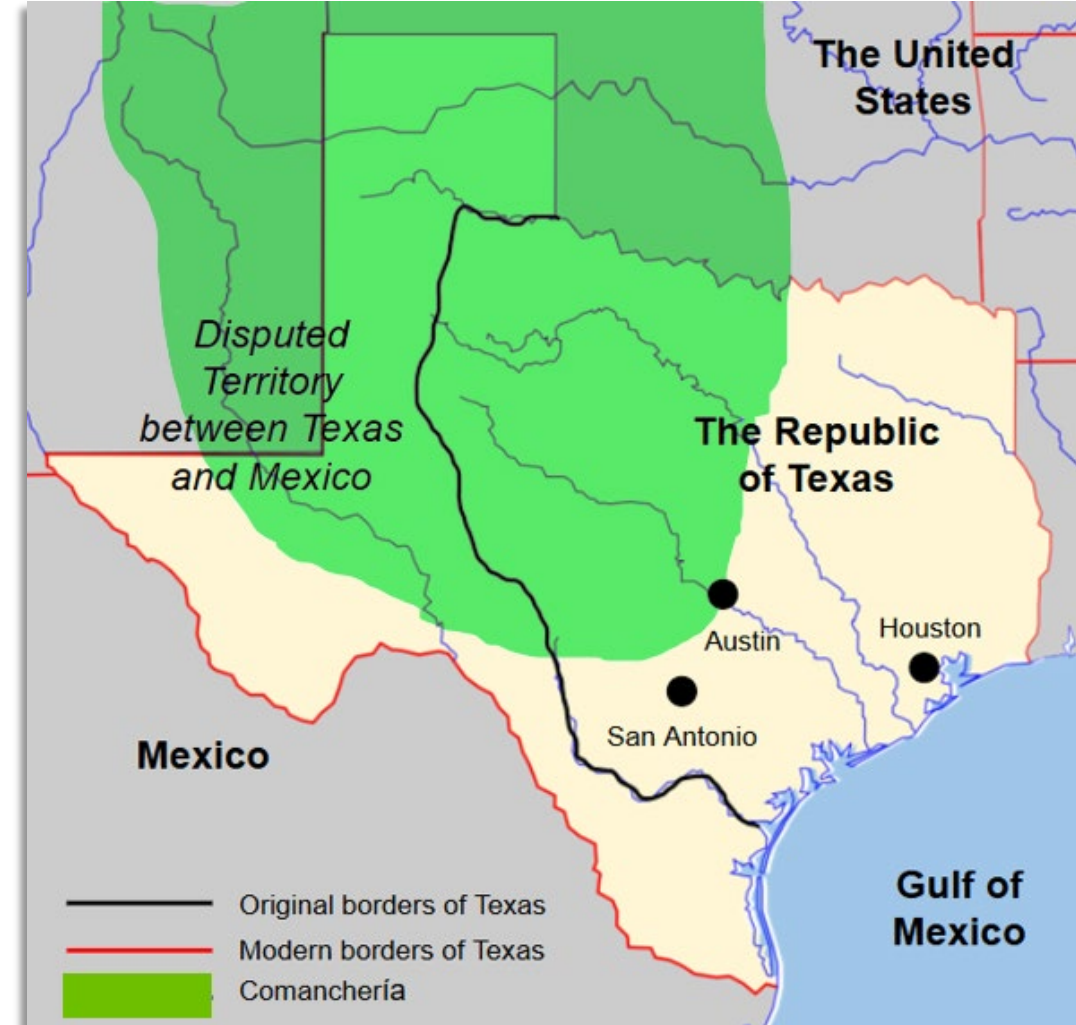
Follow the directions to complete your warm-up



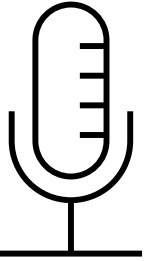
- Make observations and inferences about the information in the map to answer the questions on your warm-up.



- Discuss with a partner



# Share with the class



I think the shaded area labeled *Comanchería* means \_\_\_\_\_

I think the *Comanchería* territory might have affected towns like San Antonio and Austin by \_\_\_\_\_



# Essential Questions

What was the Council House Fight? What were the causes and events of the Council House Fight, and why was it significant?

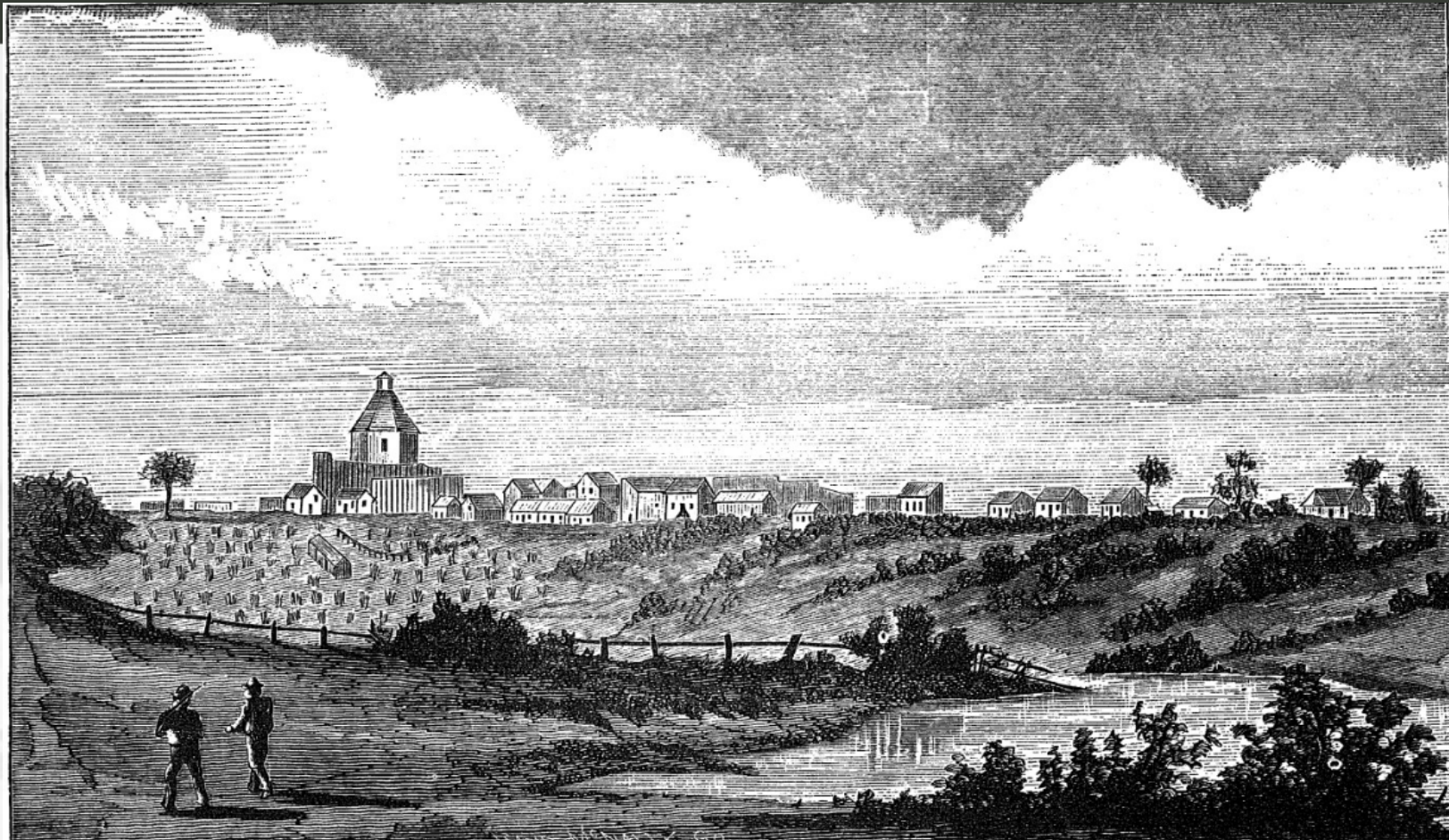
# In today's lesson...

1. **We will** examine the causes, key events, outcome and significance of the Council House Fight.
2. **I will** read a passage explaining key information about the Council House Fight. Then I will use primary source excerpts about the Council House Fight to create a storyboard of fight from a young San Antonio woman's point of view.





# The Council House Fight



*An Illustration of San Antonio, 1840*  
*The Portal to Texas History*



# Mary Maverick and the Council House Fight



*A Comanche Warrior  
The Smithsonian Museum*



*A group of Texas Rangers  
The Portal to Texas History*



# Exit Ticket

Follow the directions to complete your exit ticket



- Make observations and inferences about the information in the map to answer the questions on your warm-up.

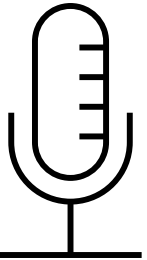


- Discuss with a partner





# Share with the class



One true statement from the exit ticket about the Council House Fight was that \_\_\_\_\_