

TO ARMS!



TO ARMS!

VOLUNTEERS FOR THE Mexican War!



ALL who wish to serve in the present war with Mexico, are requested to send in their names. All who see the necessity of filling the empty places of the 12 months Volunteers are invited to come forward immediately. All who prize the blessing of peace lend your aid to strike a blow so heavy that the arm which now rejects the olive branch, shall sue for its protection. All who feel the necessity of preserving untarnished the long cherished loyalty of the Old North State, we bid you welcome.

It is not expected that all men will volunteer, all men were not made soldiers, but all owe duty to their Country; they owe her support, encouragement and assistance---let them yield these, but let those who are able gird on their armour and with a stout heart and a stalwart arm march to the battle-field, there to rival in deeds of arms their only equals, their fellow countrymen. A faint heart may volunteer for a time but the soldier glories in the end; his sword once drawn in his country's cause, knows not its sheath again till her wrongs are all avenged.

A list is now opened for Volunteers, under the supervision of Major W. A. Whitfield, Milton, Mr. J. G. Mason Roxboro, and G. Wortham, Esq., Oxford.

December 5th, 1846.

Unit 6: The Republic of Texas

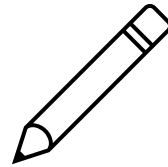
Lesson 8: Looking Ahead

Warm-up:

Follow the directions to complete your warm-up



- Consider what we know about Texas annexation and then make a prediction:



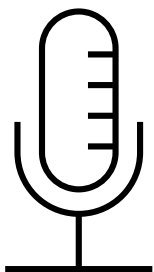
- Circle or highlight any terms from the chart that you think we will probably see in the next unit.



- Discuss with a partner.

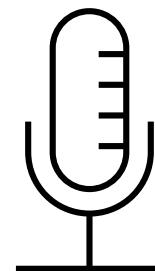


Share with the class



One statement that I think will be true in the next unit is that _____

The statement that I believe is 100% certain to happen is that _____



Essential Question

What were some of the significant effects of Texas' annexation to the United States that we will learn more about in the next unit?

In today's lesson...

1. **We will** examine different points of view regarding Texas' annexation and identify the significant effects of annexation on Texas, Mexico, and the United States.
2. **I will** read short passages and answer comprehension questions about point of view, main ideas, supporting evidence, and the significance of Texas' annexation.

So, Texas is Part of the United States . . .



... Now What?



Juan Almonte: Mexico's Minister to the United States

*"...an act of aggression, the most unjust which can be found recorded in the annals of modern history – namely, that of **despoiling** a friendly nation, like Mexico, of a considerable portion of her territory."*



The Portal to Texas History

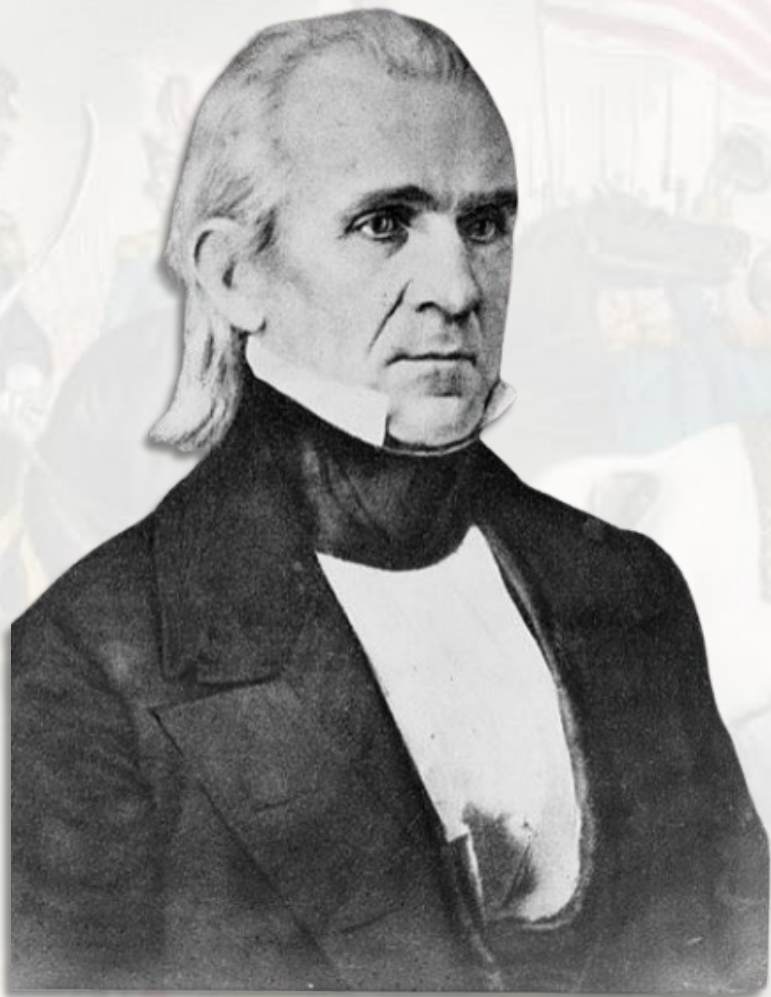
Texas _____
History _____
for _____
Teachers _____

On the Road to War...



James K. Polk

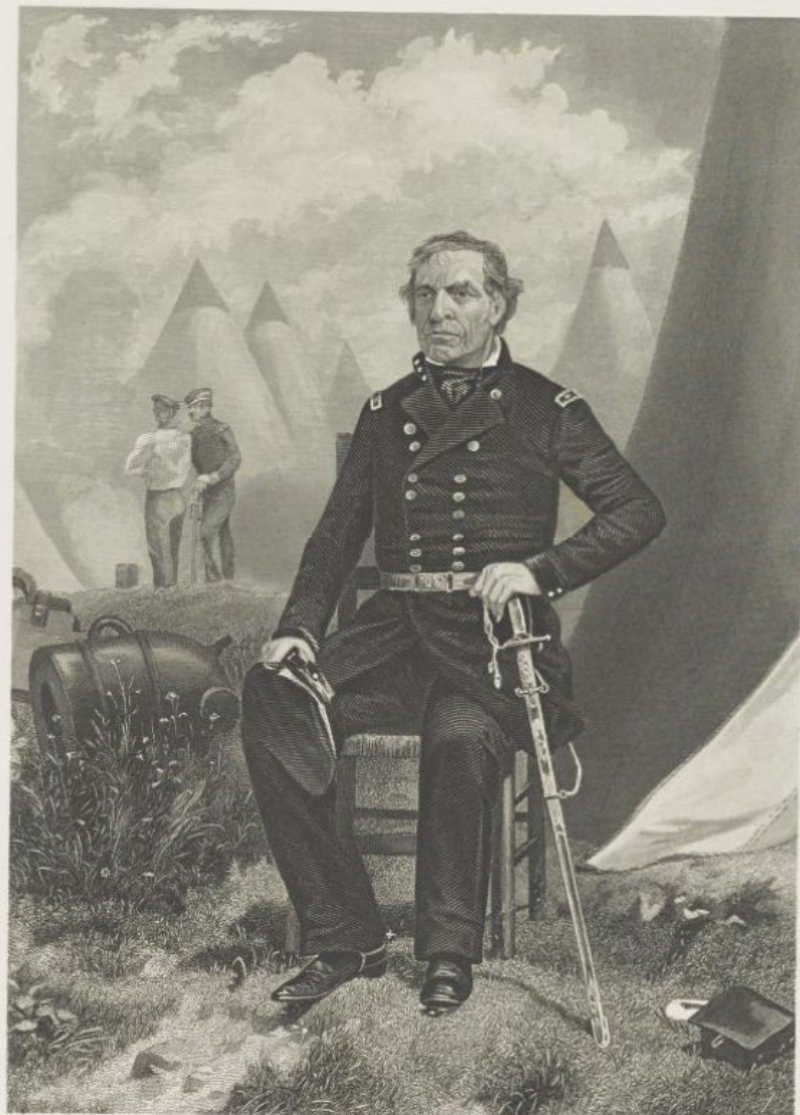
U.S. President 1845 - 1849



Library of Congress



The United States 1846



Zachary Taylor

Library of Congress

Zachary Taylor

General of the American Army in the U.S. – Mexico War



Texas General Land Office



Battle of Palo Alto

Map of the Battle of Palo Alto, 1846

The Portal to Texas History

Exit Ticket:

Follow the directions to complete your exit ticket



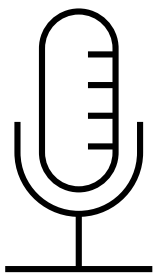
- Create a True or False question based on information from today's lesson.



- Be prepared to explain your answer
- Discuss with a partner.



Share with the class



(Read your true or false question)

*Do not provide the answer until
after the class has a chance to
answer your question.*