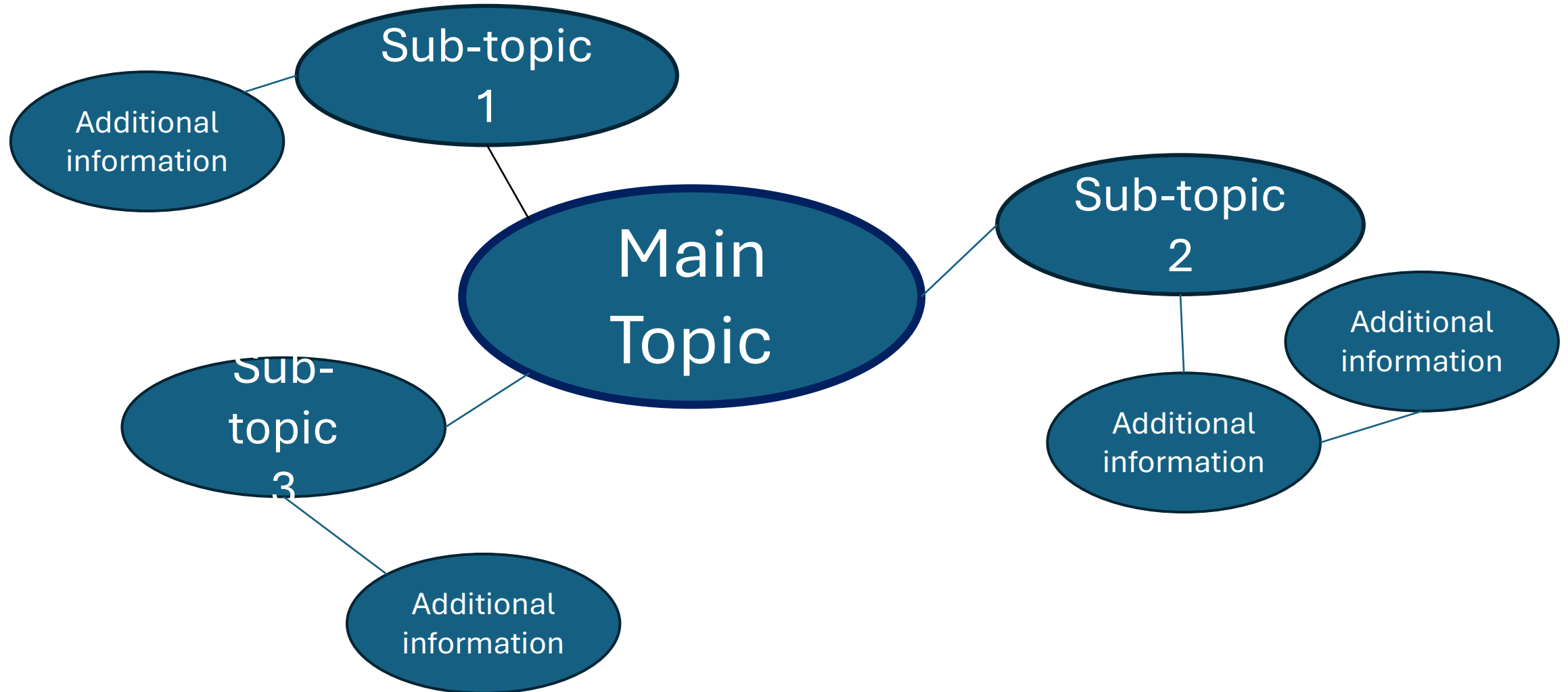


Mind Map

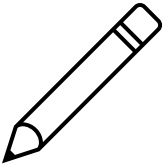


Warm-up:

Follow the directions on your warm-up



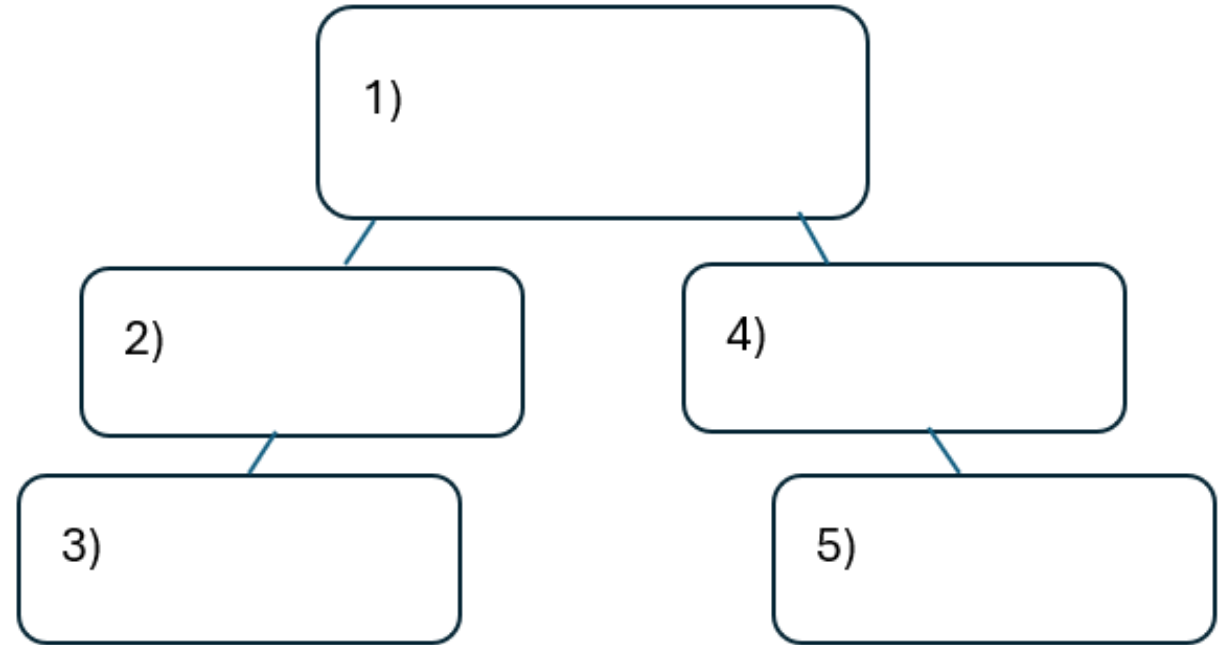
- Use the word bank provided to fill in the small mind map of your warm-up.



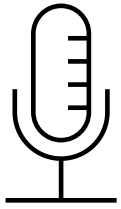
- Place each term where you think it fits best in your mind map.



- Discuss with a partner.



Share with the class



I think the primary topic in box number **one** is _____

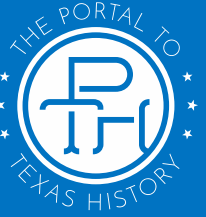
I think the subtopic in box number **two** is _____, and box number **three** is _____



I think the subtopic in box number **four** is _____, and box number **five** is _____



Essential Question



How do the key terms and concepts from Unit 3: The Spanish Colonial Era connect to each other?

In today's lesson...



1. We will make connections between key terms and concepts within all of Unit 3: The Spanish Colonial Era
2. I will create a Mind Map using terms and concepts from the class slides presentation.



Topic & Subtopics

ONE of these items is the primary unit topic. The other two are subtopics. Choose the primary unit topic and write it in the middle of your paper. Write the other two around the main topic. Leave plenty of space.

Mission Presidio
System

War for Mexican
Independence

Spanish
Colonial Era



Add to your mind map

Place each item below where it fits on your mind map. Keep in mind, you can write some items in more than one place.

Goals

Causes

Effects

Missions

Events



Make Connections

1. Connect each item below to one of the topics on your Mind Map.
2. There may be more than one place that these items connect. Be ready to explain where you put each one.

French Threat

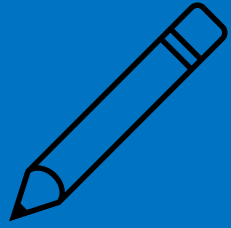
Convert Texas
Indians

Caste System

Want equality

East Texas

Father Miguel
Hidalgo y Costilla



Make Connections

1. Connect each item below to one of the topics on your Mind Map.
2. There may be more than one place that these items connect. Be ready to explain where you put each one.

Assimilate Texas
Indians

Overthrow Spanish
government

Corpus Christi
de la Isleta

Los Adaes

Filibusters

San Antonio



Make Connections

1. Connect each item below to one of the topics on your Mind Map.
2. There may be more than one place that these items connect. Be ready to explain where you put each one.

Strengthen Spain's
claim to TX

Louisiana
Purchase

First TX capital

Philip Nolan

East Texas

1st TX mission



Make Connections

1. Connect each item below to one of the topics on your Mind Map.
2. There may be more than one place that these items connect. Be ready to explain where you put each one.

Midpoint to East
Texas

Caddo Tribe

Gutiérrez-Magee
Expedition

Mustang thief
& trader

Camino Real

Damián
Massanet



Make Connections

1. Connect each item below to one of the topics on your Mind Map.
2. There may be more than one place that these items connect. Be ready to explain where you put each one.

Lack of
support

Canary
Islanders

San Sabá

Captured San
Antonio

Margil de Jesús

El Paso



Make Connections

1. Connect each item below to one of the topics on your Mind Map.
2. There may be more than one place that these items connect. Be ready to explain where you put each one.

1718

TX Indians
disinterested

2nd Capital of
TX

Battle of
Medina

Comanchería

Grito de
Dolores



Make Connections

1. Connect each item below to one of the topics on your Mind Map.
2. There may be more than one place that these items connect. Be ready to explain where you put each one.

Comanche attacks

Mexican people
won freedom

1821

Spanish Texas
weaker than ever

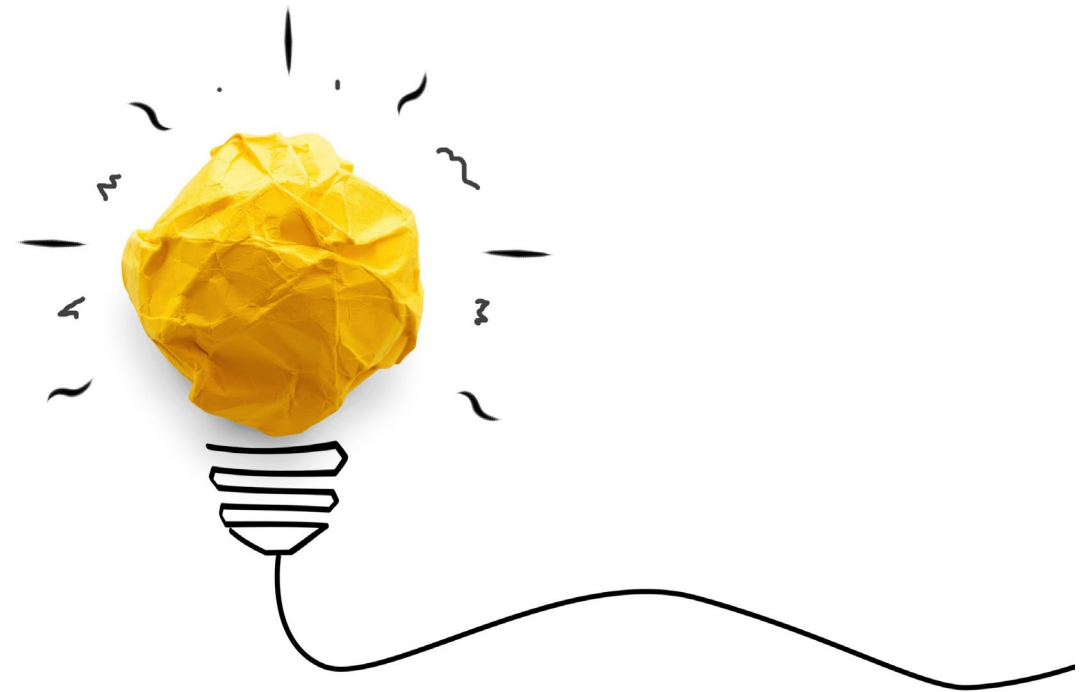
Spain closes
missions

Mexico becomes
a country

Create Connections

Now take a few minutes to add any information you can think of to your Mind Map.

You can add facts, descriptions, explanations, cultural information, or anything else you can think of.



Exit Ticket



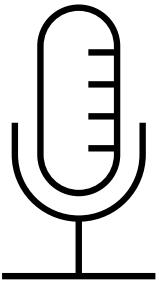
Complete the sentence summarizing the main idea from our unit.



Discuss with a partner.



Share your response



The _____ is primarily
characterized by _____