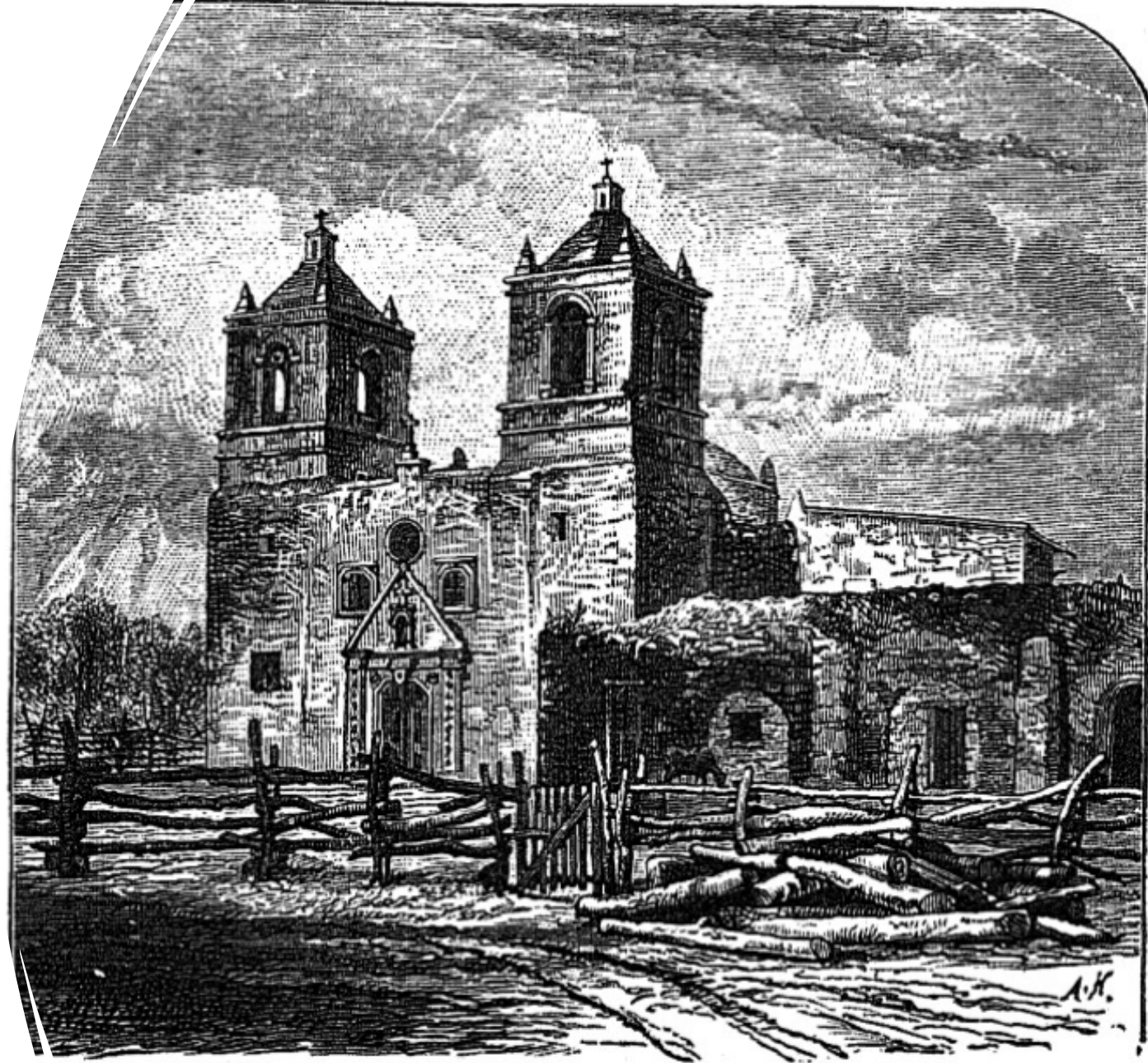


Unit 3:
**The Spanish
Colonial Era**

Lesson 5:
**The Mission
Presidio System**



THE OLD CONCEPCION MISSION, NEAR SAN ANTONIO.

Warm-up

Follow the directions below to complete your warm-up



- Read and consider the scenario.



- Where would you establish the first Spanish mission in Texas?



- Circle the location on your map and explain your answer.



- Share your response with a partner.



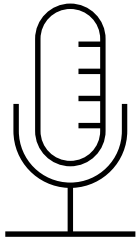
Share with the class:

Use cardinal directions to share your chosen location with the class (**North, South, East, West, Northwest, etc.**)

I suggest Spain build its first mission in _____



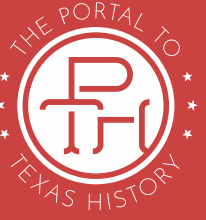
I chose this location because _____



Essential Questions

What was the Mission Presidio System? What were Spain's goals for the system in Texas? What happened with the first missions in Texas?

In Today's Lesson



- We will** examine the beginning of the Mission Presidio System in Texas.
- I will** read three short passages, identify and record the key information, the significance of each reading, and answer a comprehension question for each passage.

Texas
History
for
Teachers

The Mission Presidio System Lesson



<https://education.texashistory.unt.edu>

The Mission Presidio System



In the **1500s**, Spain began establishing **missions in Central Mexico to convert and assimilate** American Indians into the Spanish religion and culture. Spain established **presidios** to protect those missions, and more importantly, to protect the resources around them, like **silver mines**.

In **1690**, Spain expanded the Mission Presidio System into Texas **to strengthen its claim to the land, keep the French out of the region, and convert Texas Indians to Catholicism**. The Texas missions struggled for nearly 100 years until Spain finally began ending the mission system in Texas in **1794**.

Key Information

Religious settlements to convert Indians and military forts to protect the land from the French.

Significance

The Mission System failed to give Spain a strong presence in Texas.

Essential Question

What is one reason for the mission system's failure in Texas?



A Spanish Mission

THE PORTAL
TO TEXAS HISTORY

- | | |
|--|---|
| ① Church Entrance – Entrada de Iglesia | ⑩ Foundations of Convento – Cimientos del Convento |
| ② Museum Entrance – Entrada de Museo | ⑪ N.E. Corner Bastion – Esquina del Bastión al Nordeste |
| ③ Foundations - Original Floors – Cimientos Pisos Originales | ⑫ Indians' Quarters – Sector Asignado a los Indios |
| ④ Priests' Quarters – Cuartos de los Padres | ⑬ Nature Trail - Lime Kiln – Vereda Naturaleza Rastro Calera |
| ⑤ Reconstructed Grill Window – Enrejado Ventana Reedificar | ⑭ Forge – Herrería |
| ⑥ Workshop – Taller | ⑮ Ruins of Living Quarters – Ruinas del Sector de Alojamiento |
| ⑦ Remnant of Original Building Wall – Vestigio de Pared Original | ⑯ Hearth – Chimenea |
| ⑧ Cistern or Well – Cisterna o' Noria | ⑰ Adobe-Walled Compound – Barda de Adobe |
| ⑨ Skull and Crossbones – Calavera y Canillas Cruzadas | ⑱ S.W. Corner Bastion – Esquina del Bastión al Sudoeste |

One thing I notice about this mission is ____



One question I have about this mission is ____



The Portal to Texas History

East Texas Missions



The **French** began establishing settlements east of Texas in Louisiana during the late 1600s and early 1700s. **In order to prevent the French from moving into east Texas**, the Spanish decided to establish a mission there in 1690 among the powerful and wealthy **Caddo Confederacy**. The mission was called **San Francisco de los Tejas**. It was founded for the **Tejas** Indians – a tribe within the Caddo Confederacy.

The **Caddo** were interested in **trade** with the Spanish. They were **not** interested in living in the missions or adopting the Spanish way of life.

When **disease** spread through the missions killing many Caddo people, the Caddo forced the missionaries to abandon the East Texas missions and leave the area in **1693**.

Key Information

Spain established the first missions in East Texas to prevent the French from entering the region.



Significance

The Caddo drove out the Spanish because of disease and lack of interest.



Essential Question

Who had more power in the region – the Caddo or the Spanish? Explain your answer.





THE PORTAL
TO TEXAS HISTORY

The First East Texas Mission: San Francisco de los Tejas

One thing I notice
about this map is _____



One question I have
about this map is _____



San Antonio



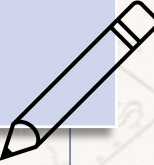
Spain continued establishing missions in **east Texas**, despite their initial lack of success. The Spanish government really wanted to prevent the French from taking over that region.

Spain's attempts to settle east Texas presented a new problem: **east Texas was incredibly far from the more populated areas of Mexico**. Moving people and supplies from central Mexico to east Texas was a long and difficult task. **Travelers needed a place to rest halfway through the journey.**

In **1718**, Spain founded **San Antonio** as a midpoint on the route to the east Texas missions. The route became known as "**El Camino Real**" or the Royal Road.

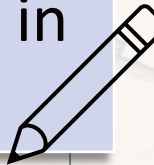
Key Information

Spain founded San Antonio in 1718 as a midpoint on the route to east Texas.



Significance

San Antonio will go on to become an important city in Texas history.



Essential Question

Do you think Spain will establish missions in San Antonio too? Why or why not?





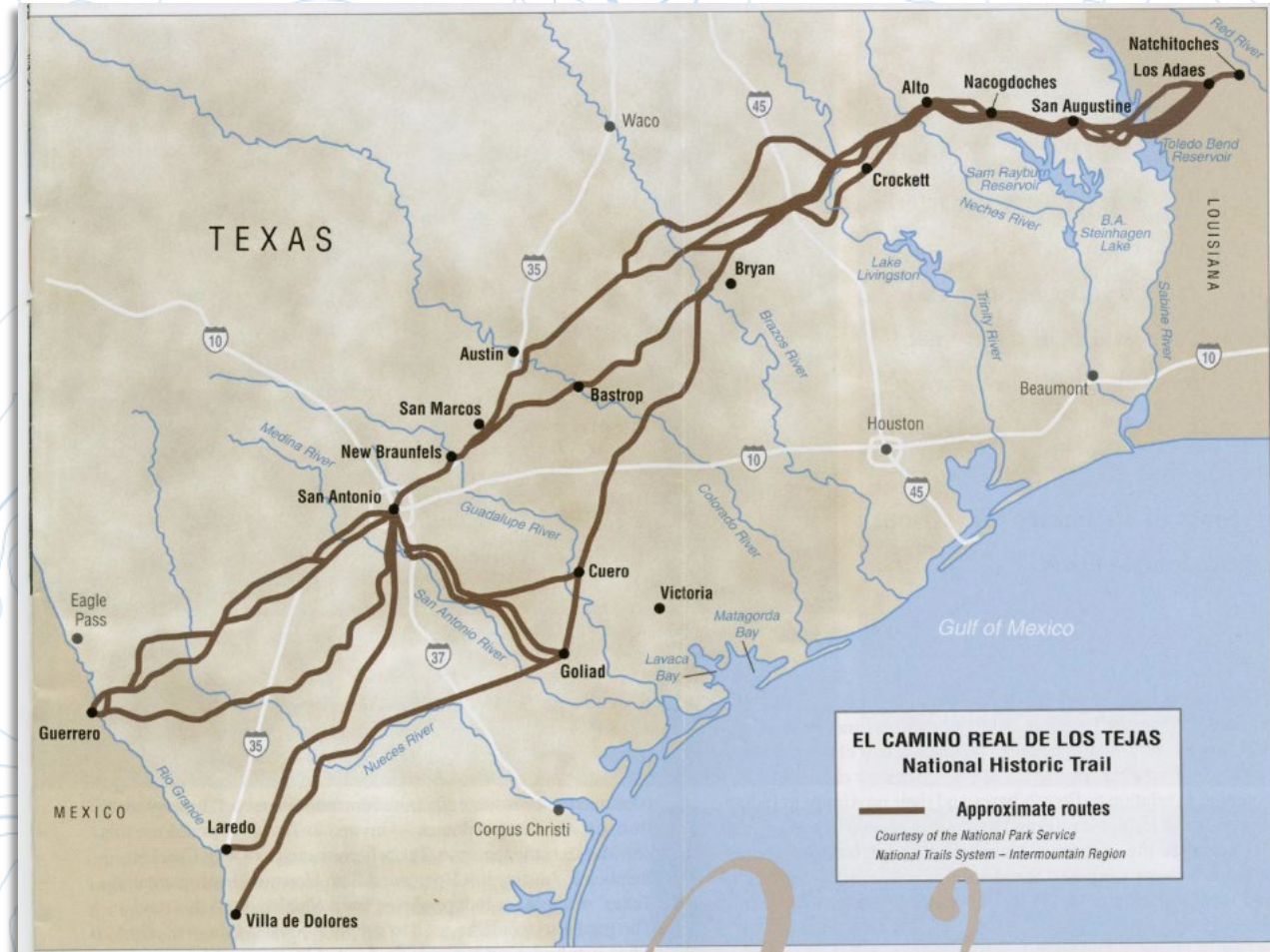
THE PORTAL
TO TEXAS HISTORY

San Antonio & El Camino Real

One thing I notice
about this map is _____



One question I have
about this map is _____



Exit ticket

Follow the directions below to complete your exit ticket.



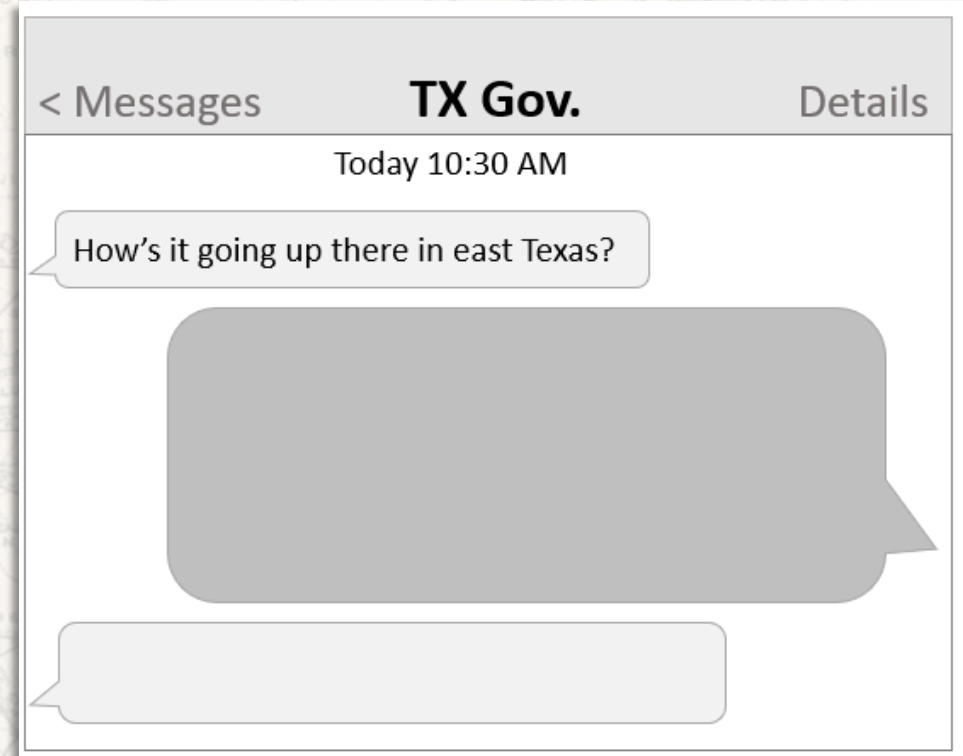
- Read the scenario and follow the instructions to complete the text message conversation.



- How would you respond to the Spanish governor of Texas?

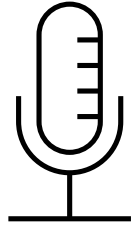


- Share your response with a partner.



Share with the class:

My response to the
governor would be, “ _____ ”



His response would
probably be, “ _____ ”

